

This lecture is being recorded

18-452/750

Wireless Networks and Applications

Lecture 23:

Dynamic Spectrum Access

Peter Steenkiste

CSD and ECE, Carnegie Mellon University

Spring Semester 2021

<http://www.cs.cmu.edu/~prs/wirelessS21/>

Overview

- **Spectrum use background**
 - **Concepts and approaches**
 - **DSA technologies**
 - **Case study: TV white spaces**
-
- **Some material based on slides by Ian Akyildiz, Raj Jain**

Spectrum Availability

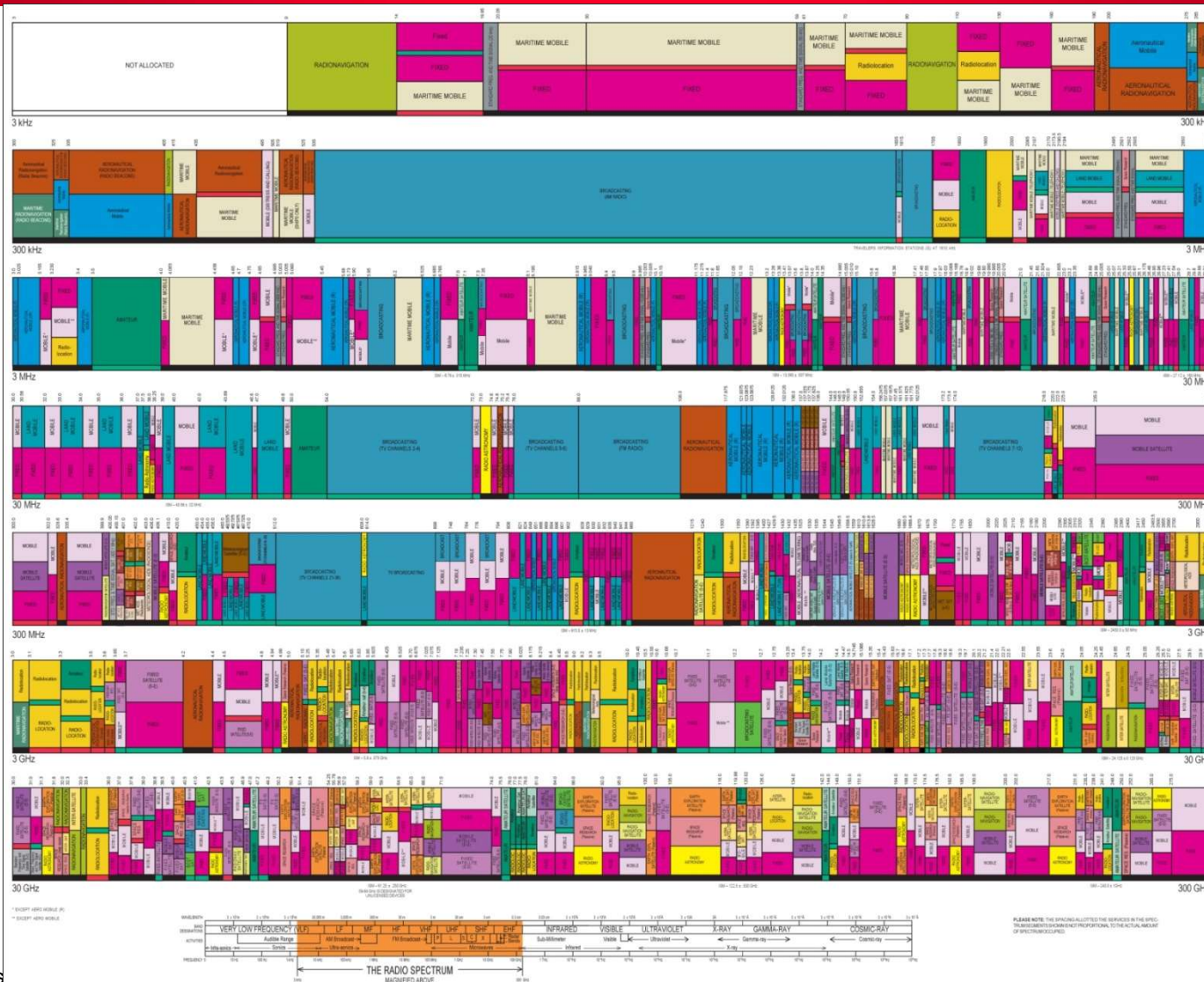
- **300 GHz is huge amount of spectrum!**
 - Spectrum can also be reused in space
- **Not quite that easy:**
 - Most of it is hard or expensive to use!
 - Noise and interference limits efficiency
 - Most of the spectrum is allocated by FCC
- **FCC controls who can use the spectrum and how**
 - Need a license for most of the spectrum
 - Limits on power, placement of transmitters, coding, ..
 - Need to optimize benefit: guarantee emergency services, simplify communication, return on capital investment, ...
 - National Telecommunications and Information Agency (NTIA) for federal government communications

Spectrum Allocation

<http://www.ntia.doc.gov/osmhome/allochrt.html>

- **Most bands are (statically) allocated**
- **Industrial, Scientific, and Medical (ISM) bands are “unlicensed”**
 - But still subject to various constraints on the operator, e.g. 1 W output
 - 433-868 MHz (Europe)
 - 902-928 MHz (US)
 - 2.4000-2.4835 GHz
 - Unlicensed National Information Infrastructure (UNII) band is 5.725-5.875 GHz

Spectrum Allocation in US



Different Ways of Controlling Access to Bands

- **Licensed spectrum: users need a license to use the spectrum band**
 - Cellular, radio/TV broadcast, federal agencies, ...
 - License typically provides exclusive use, i.e. license holder has full control over use of spectrum band
 - Commercial entities often pay for the license, e.g. through an auction
- **Unlicensed spectrum: no user license required**
 - Various constraints are placed on the radio to improve coexistence between users
 - E.g. transmit power, modulation, MAC, ...
 - **Devices must be licensed**

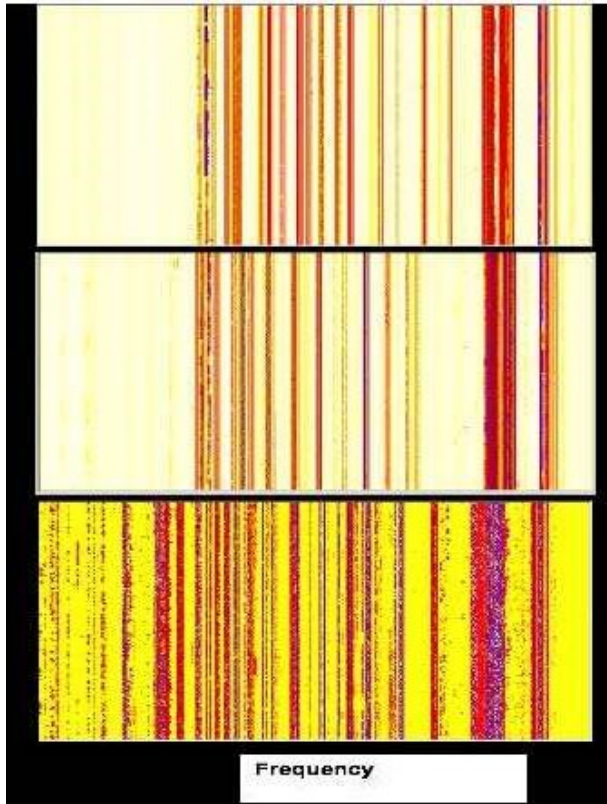
New Spectrum is Scarce

- **Suppose you need to find X MHz for a new technology or service**
- **All easy to use frequencies have been allocated**
- **Difficult to reallocate existing bands for new uses**
 - **Need to move current users somewhere**
 - **Significant investment in infrastructure**
- **Exception: higher frequency bands that become viable because of technology advances**

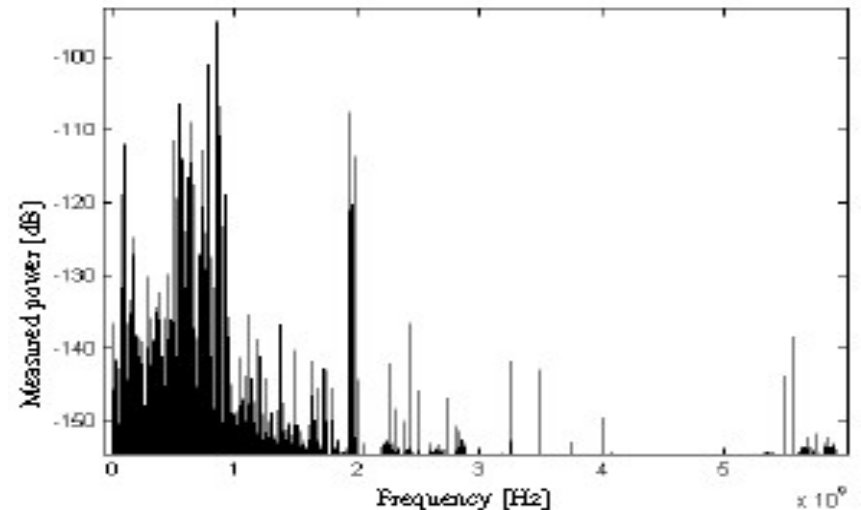
But Allocated Spectrum is not Used Effectively

- **Many bands only used in certain regions**
 - E.g. big cities, airports, etc.
- **Some bands have low utilization or are only used at certain times**
 - Driven by events, seasonal, ..
 - Wrong predictions about demand and use
- **Some bands are used inefficiently**
 - Use outdated technology
 - Expensive to replace
- **Static allocation is fundamentally inefficient**
 - This is not an unusual problem!
 - But context is unique

Examples of Low Utilization



Snapshot of utilization of 700 MHz slice of spectrum below 1 GHz



- Utilization of 0.5% in the 3-4 GHz
- 0.3% in 4-5 GHz

- According to FCC spatial and temporal utilization of assigned spectrum ranges from 15% to 85%

Dynamic Spectrum Access

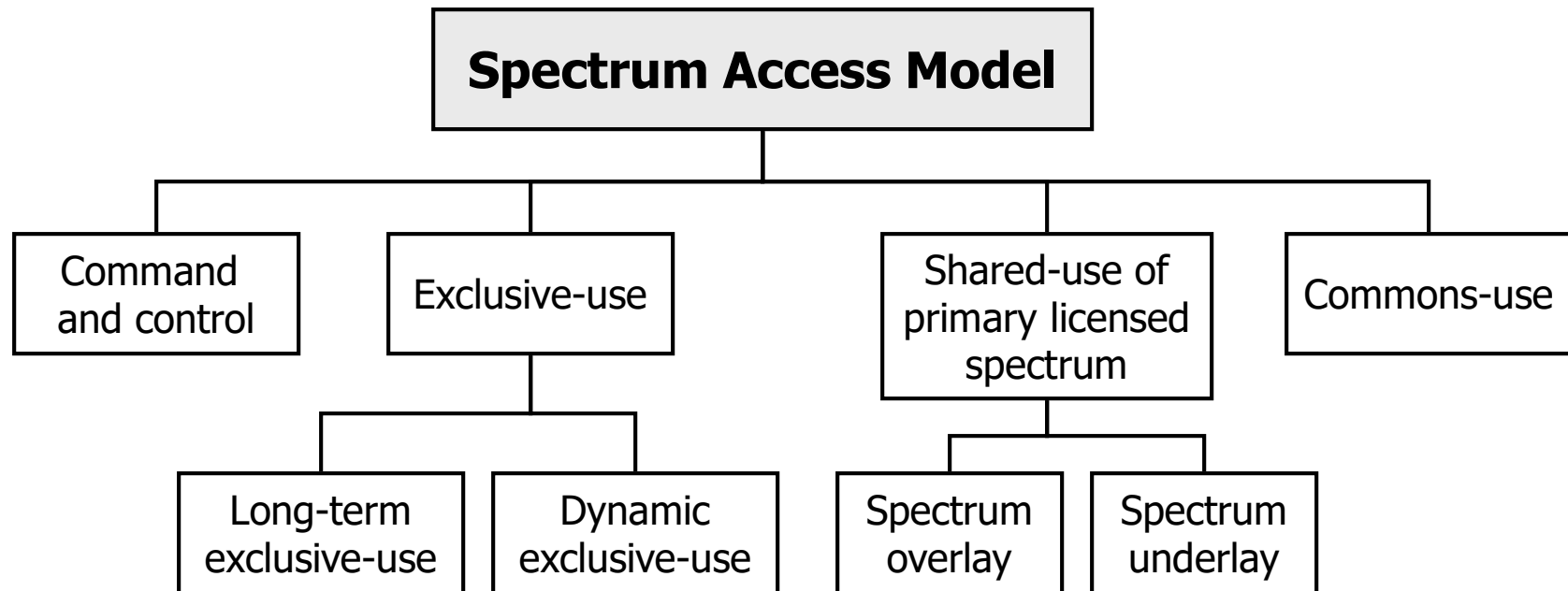
- **Make allocation “more dynamic”**
 - Can better adjust to allocation to needs
- **Main concern: avoid interference to “incumbents”**
 - Often have major investment in infrastructure
 - Interference can be fatal, e.g. first responders, businesses, ...
- **Many models are possible:**
 - License holder leases spectrum to third party
 - Allow secondary users that need to coexist with primary users – many models
- **DSA makes use of “cognitive radios”**
 - Radio parameters can be adapted at runtime based on its environments and goals
 - Can opportunistically operate in best available spectrum

Overview

- **Spectrum use background**
- **Concepts and approaches**
- **DSA technologies**
- **Case study: TV white spaces**

Dynamic Spectrum Access (DSA)

- **Dynamic spectrum access allows different wireless users and different types of services to utilize radio spectrum**

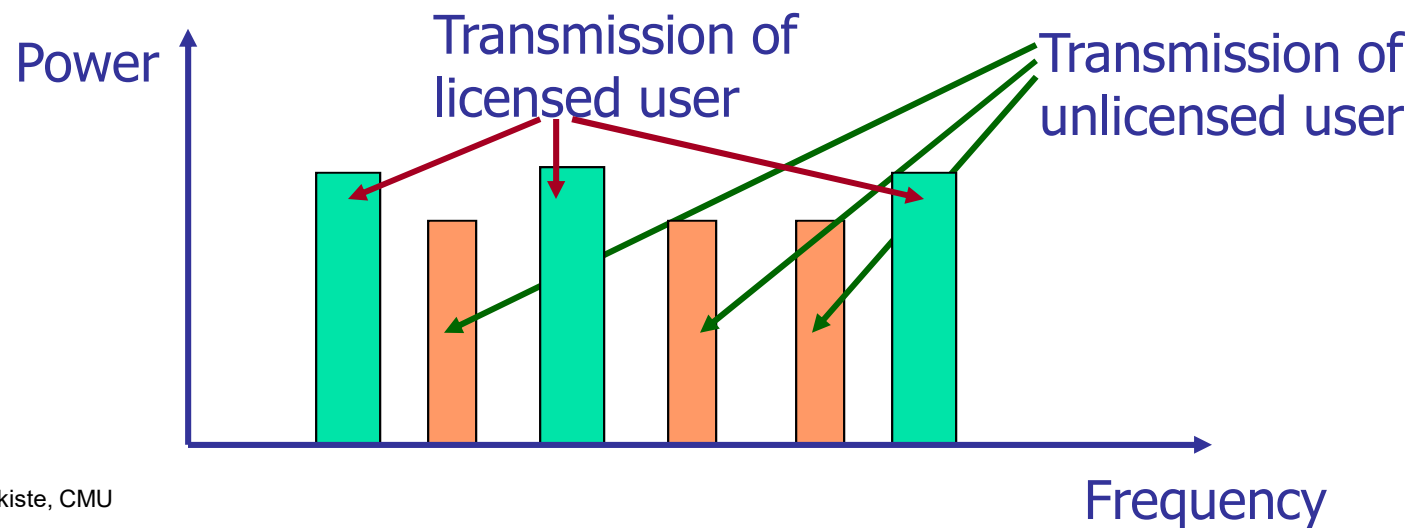
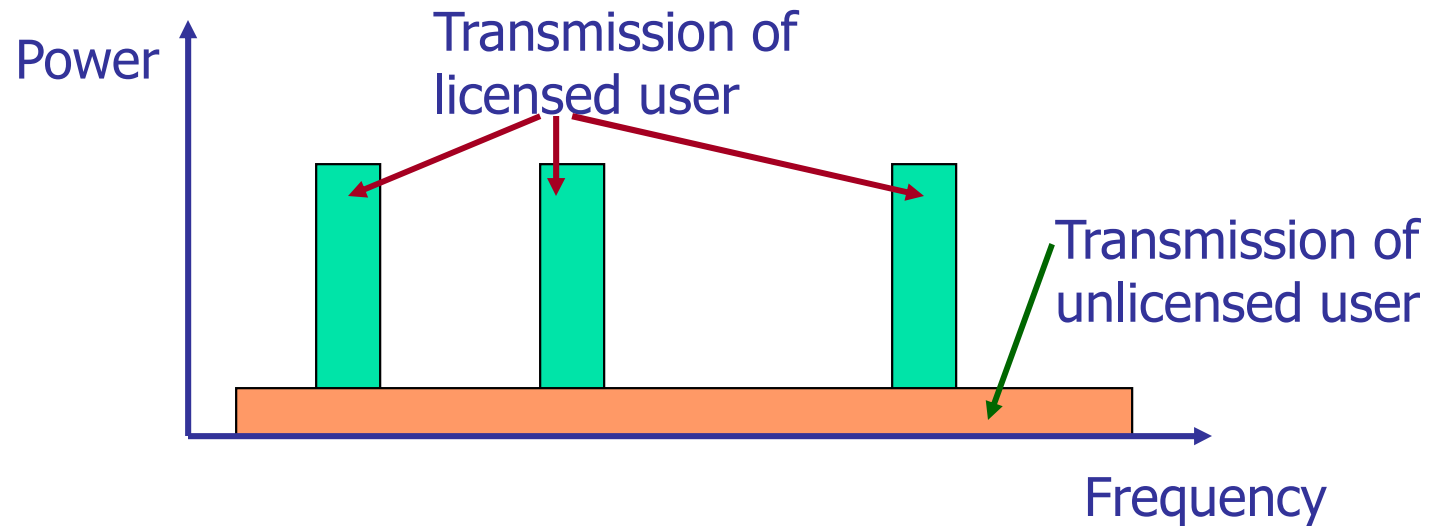


Exclusive-Use Model

Exclusively owned and used by single owner

- **Long-term exclusive-use**
 - E.g., cellular service licenses
 - Wireless technology can change (GSM, CDMA, OFDMA)
 - Owner and duration of license do not change
- **Dynamic exclusive-use (micro-licenses)**
 - Non-real-time secondary market
 - Multi-operator sharing homogeneous bands
 - dynamically change spatio-temporal allocation along with the amount of spectrum among multiple operators
 - different technology can be used
 - Multi-operator sharing heterogeneous services

Shared Use of Primary Licensed Spectrum Model



Spectrum Underlay

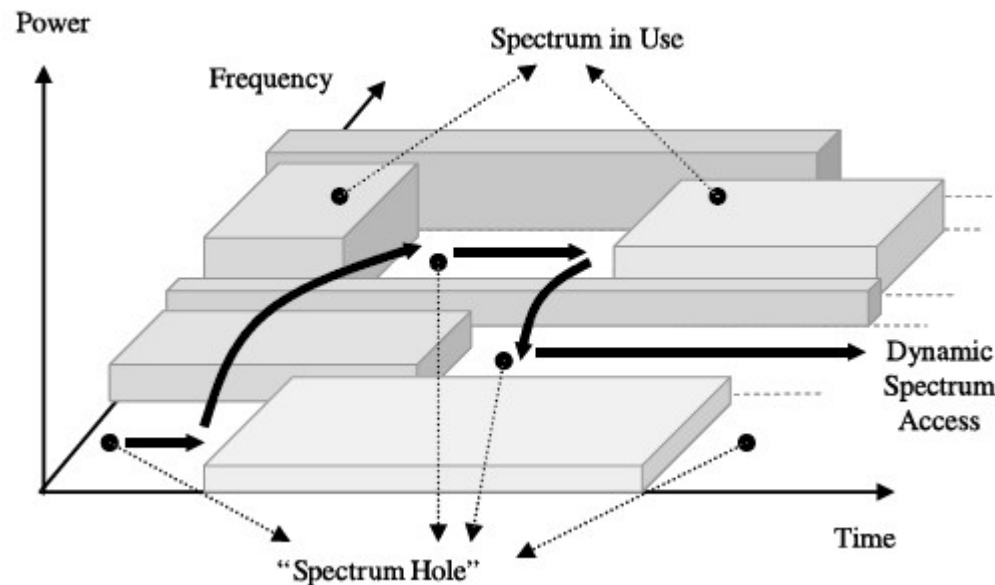
- **Spectrum underlay approach constraints the transmission power of secondary users so that they operate below the interference temperature limit of primary users.**
- **One possible approach is to transmit the signals in a very wide frequency band (e.g., UWB communications) so that high data rate is achieved with extremely low transmission power.**
- **It is based on the worst-case assumption that primary users transmit all the time; hence does not exploit spectrum white space.**

Spectrum Overlay

- **Spectrum overlay approach does not necessarily impose any severe restriction on the transmission power by secondary users – allows secondary users to identify and exploit the spectrum holes defined in space, time, and frequency (*Opportunistic Spectrum Access*).**
- **Compatible with the existing spectrum allocation – legacy systems can continue to operate without being affected by the secondary users.**
- **Regulatory policies define basic etiquettes for secondary users to ensure compatibility with legacy systems.**

Example

- Use of temporally unused spectrum, which is referred to as **spectrum hole** or **white space**.

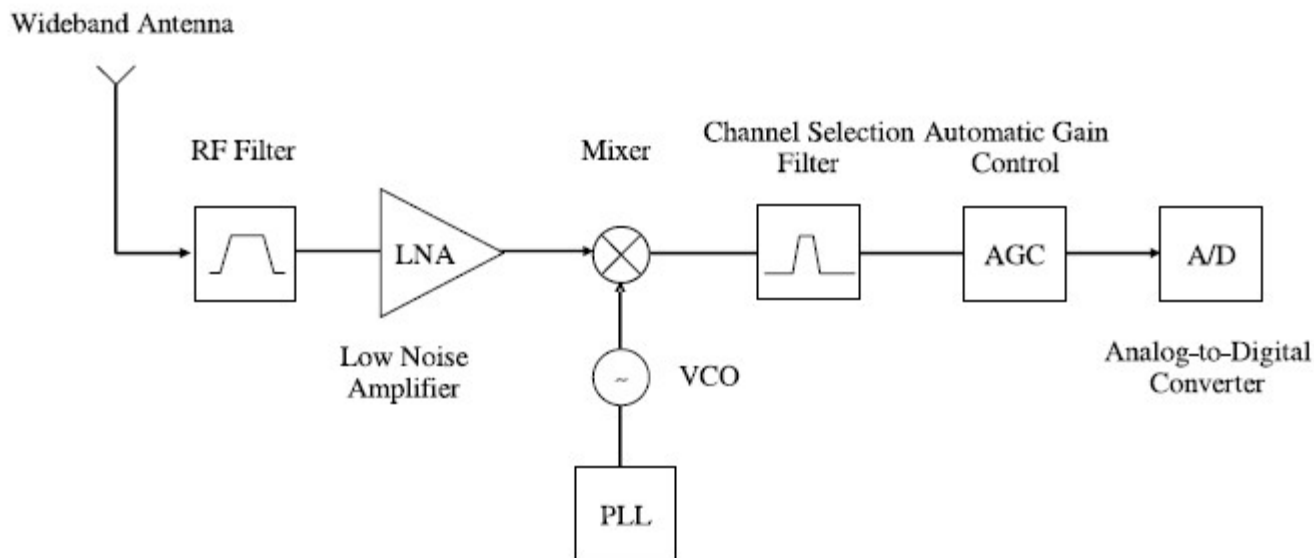


Overview

- **Spectrum use background**
- **Concepts and approaches**
- **DSA technologies**
- **Case study: TV white spaces**

Cognitive Radio - Architecture

- The novel characteristic of CR transceiver is a wideband sensing capability of the **RF front-end**.
 - RF hardware should be capable of tuning to any part of a large range of frequency spectrum.



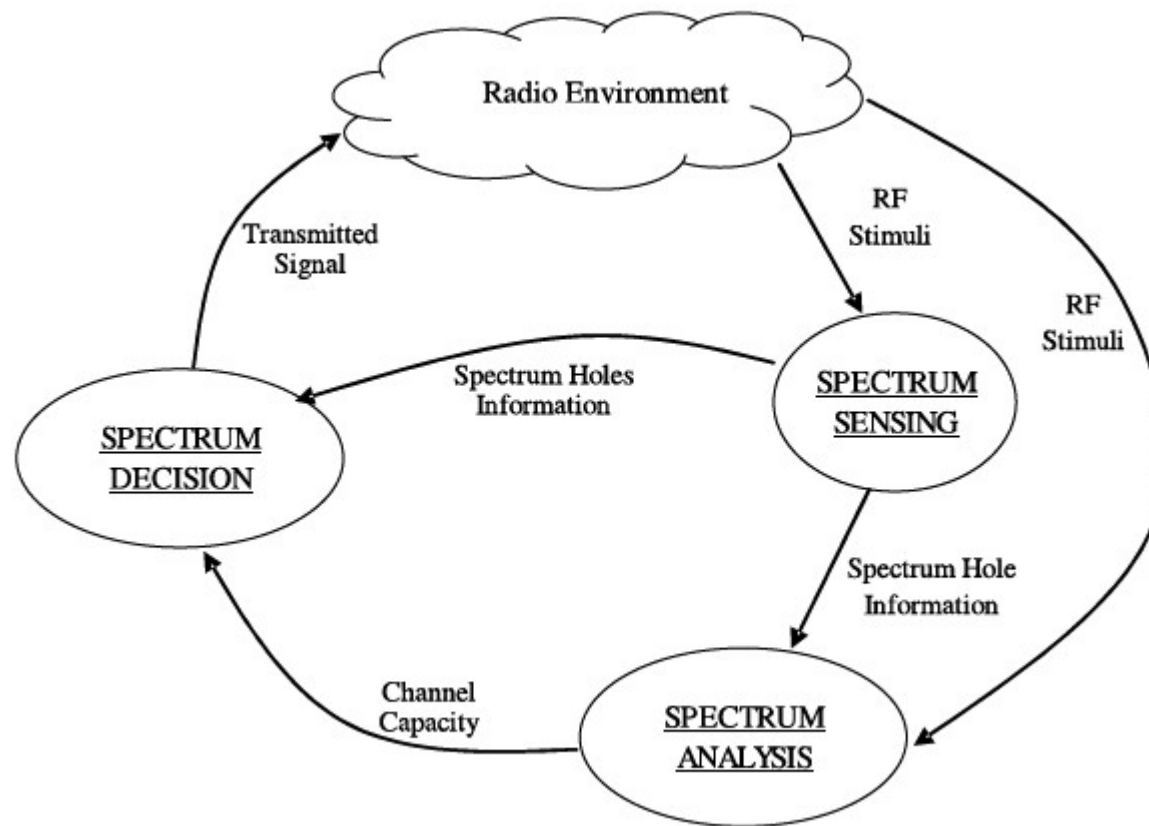
Cognitive Radio - Reconfigurability

- **The capability to adjust operating parameters for transmission on the fly without any modifications on the hardware components**
 - **Operating frequency**
 - **Modulation**
 - Reconfigure the modulation scheme adaptive to the users requirements and channel conditions.
 - **Transmission power**
 - If higher power operation is not necessary, the CR reduces the transmitter power to a lower level to allow more users to share the spectrum and to decrease the interference
 - **Communication technology**

Main Function in DSA

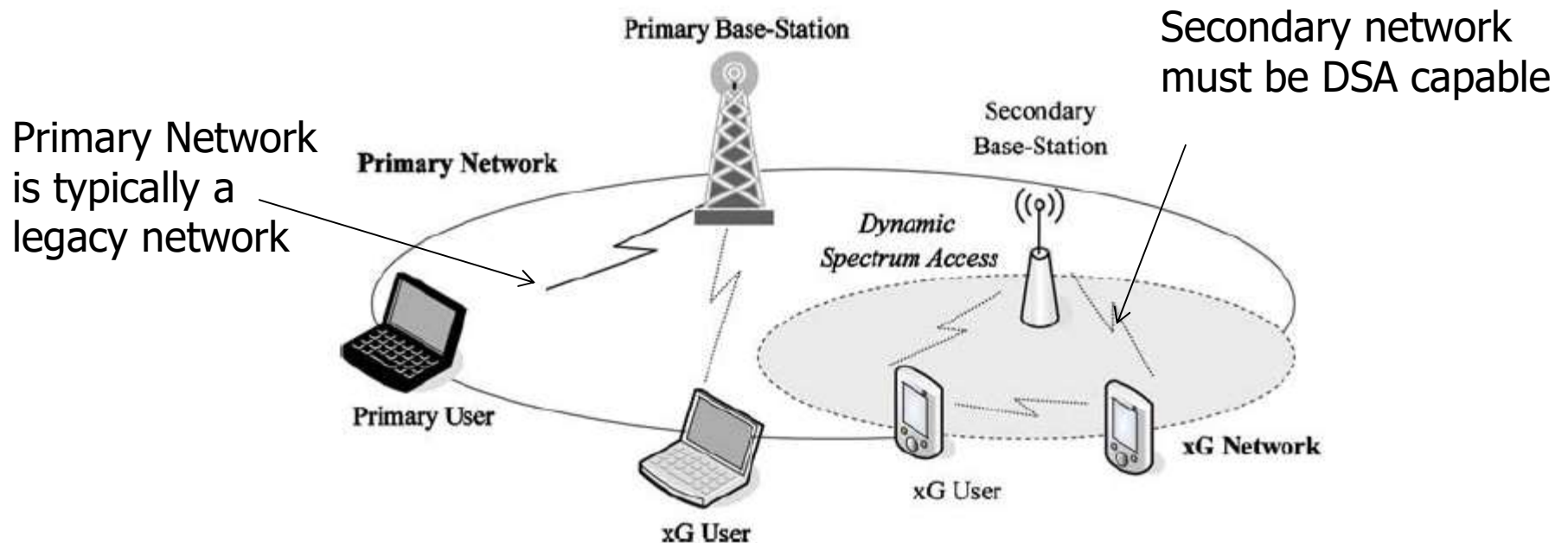
- **Spectrum sensing**
 - Detecting unused spectrum and sharing the spectrum without harmful interference with other users
- **Spectrum management**
 - Capturing the best available spectrum to meet user communication requirements
- **Spectrum mobility**
 - Maintaining seamless communication requirements during the transition to better spectrum
- **Spectrum sharing**
 - Providing the fair spectrum scheduling method among coexisting users

DSA– Cognitive Cycle



Example of DSA

- **DSA networks is deployed to exploit the spectrum holes through cognitive communication techniques**

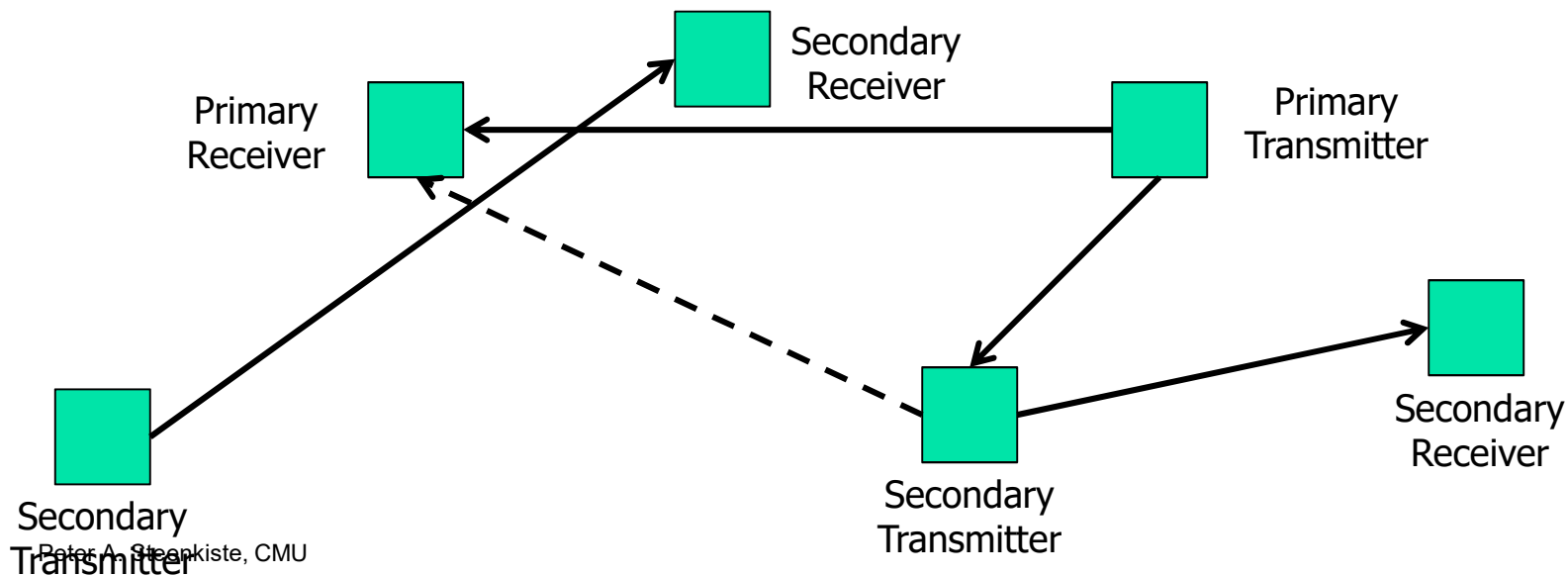


Network Applications

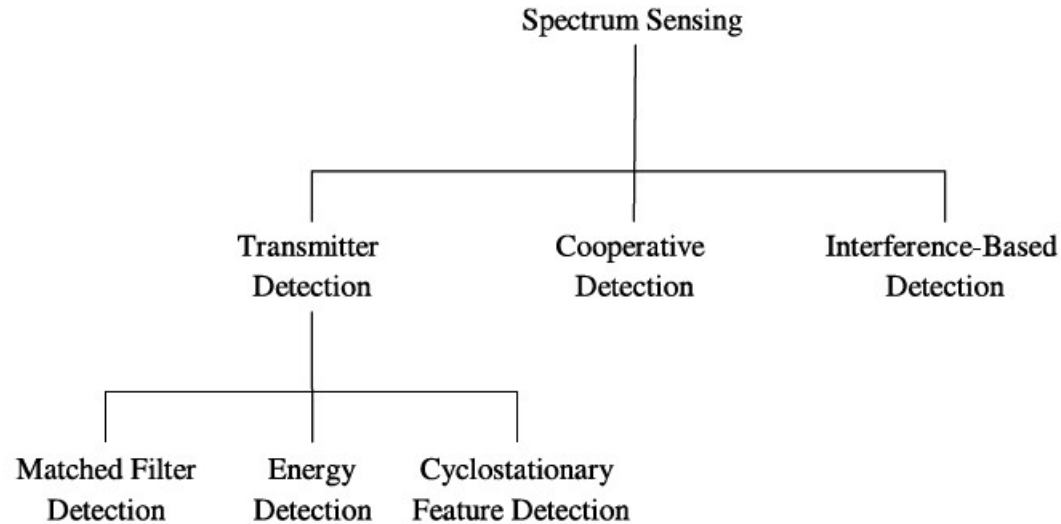
- **Leased network**
 - The primary network can provide a leased network by
 - allowing opportunistic access to its licensed spectrum with the agreement with a third party without sacrificing the service quality of the primary users.
 - e.g., Mobile Virtual Network Operator (MVNO)
- **Cognitive mesh network**
 - Networks have the ability to add temporary or permanent spectrum to the infrastructure links used for relaying in case of high traffic load.
- **Emergency network**
- **Military network**

Spectrum Sensing

- **Secondary user monitors the spectrum**
 - Must detect primary users that are receiving data within its communication range
- **In practice, it is difficult for a cognitive radio to have a direct measurement of a channel between a primary receiver and a transmitter.**



Classification of Spectrum Sensing Techniques



- **Transmitter detection approach: the detection of the weak signal from a primary transmitter through the local observations**

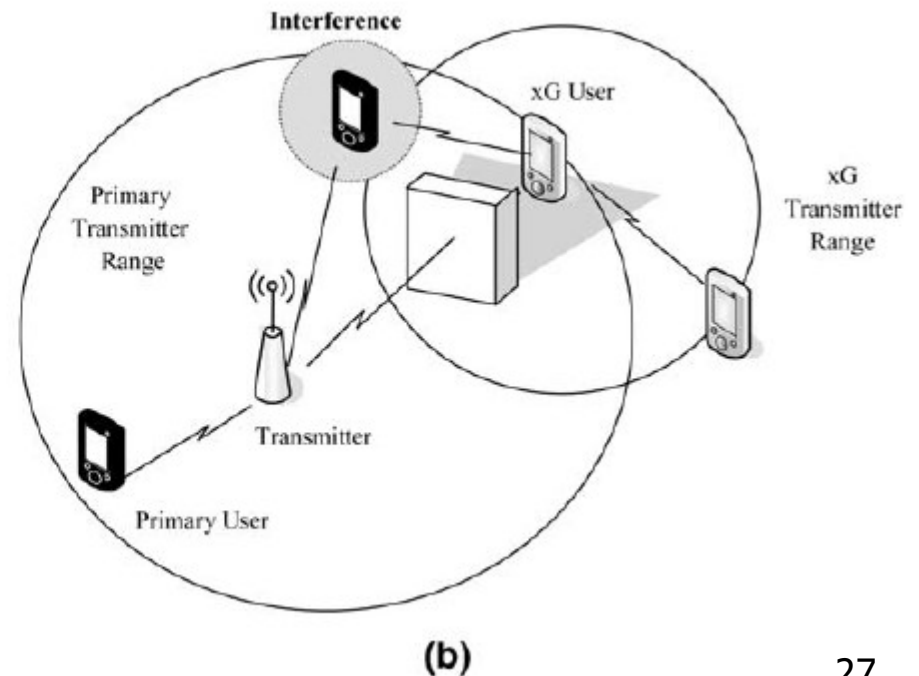
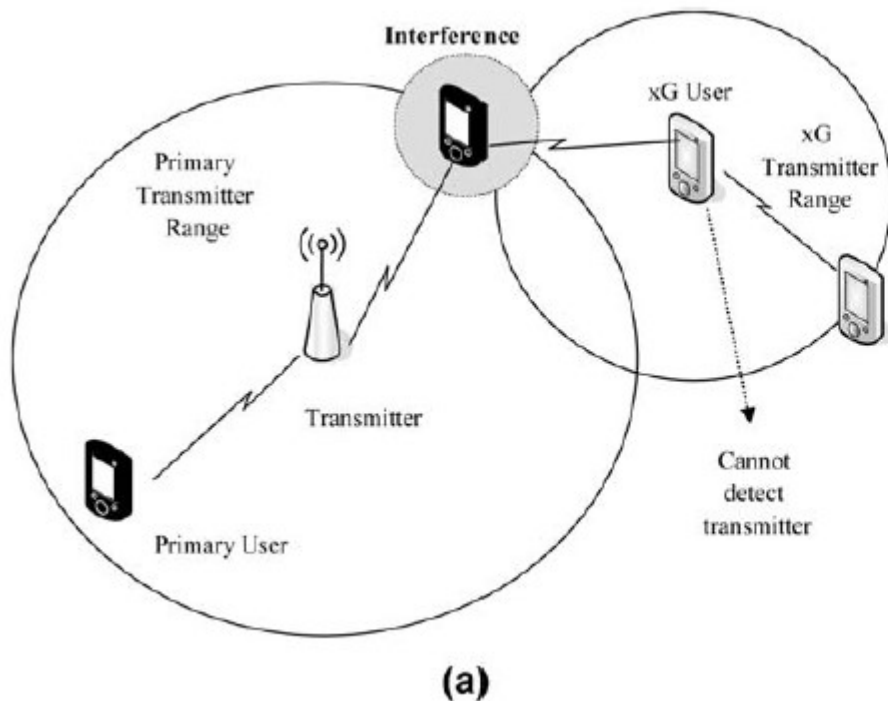
- **Basic hypothesis**

$$x(t) = \begin{cases} n(t) & H_0, \\ hs(t) + n(t) & H_1, \end{cases}$$

the AWGN
transmitted signal of the primary users
the amplitude gain of the channel

Transmitter Detection Problem

- **Transmitter detection problem**
 - Receiver uncertainty (a)
 - Shadowing uncertainty (b)
- **Even more difficult if receiver does not transmit**

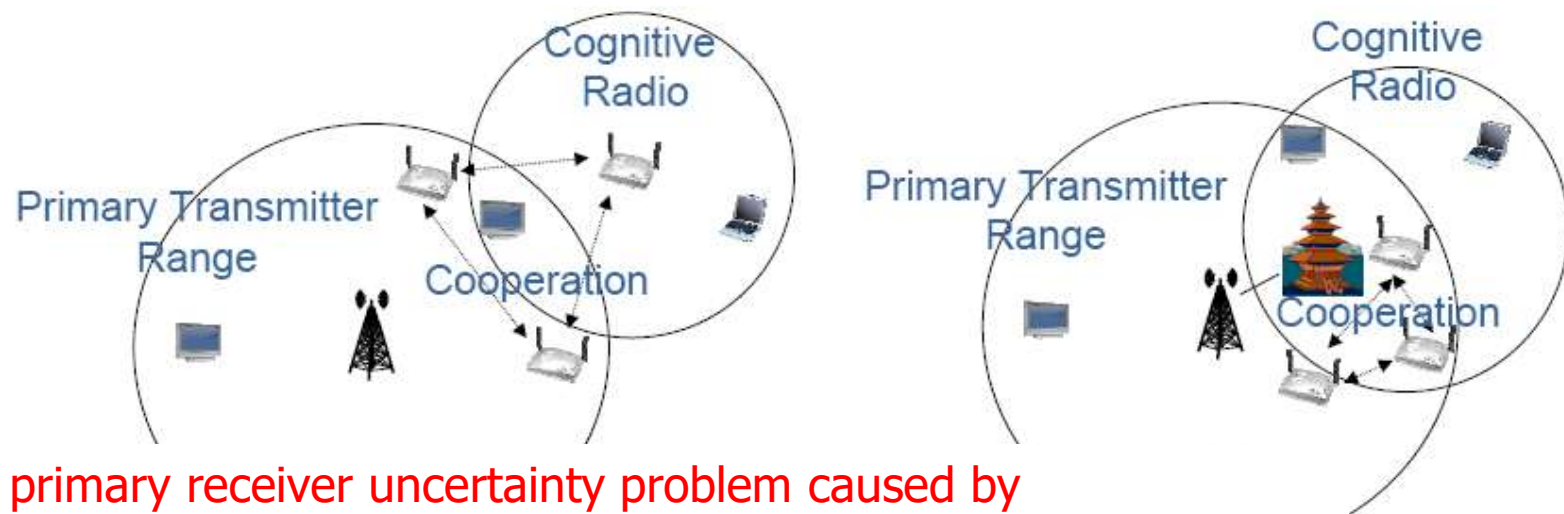


Sensing Techniques

- **Energy detection** senses for energy in the time of frequency domain
 - Can be very difficult, e.g. receive only devices
- **Matched filter** can be used if a priori knowledge of primary user signal is available
 - E.g., modulation type, shaping signal, ...
 - Optimal because it maximizes SNR in AWGN channel
- **Cyclostationary detectors** look for signals with periodic properties
 - Modulated signals have a mean and autocorrelation that exhibit periodicity.
 - These features are detected by analyzing a spectral correlation function.

Cooperated Spectrum Sensing

- **Cooperated spectrum sensing methods where information from multiple secondary users are incorporated for primary user detection.**
 - allow to mitigate the multi-path fading and shadowing effects, which improves the detection probability in a heavily shadowed environment.



The primary receiver uncertainty problem caused by the lack of the primary receiver location knowledge is unsolved.

Spectrum Analysis

- **The available spectrum holes show different characteristics which vary over time.**
- **Spectrum analysis enables the characterization of different spectrum bands,**
 - **which can be exploited to get the spectrum band appropriate to the user requirements.**
- **In order to describe the dynamic nature of DSA networks, each spectrum hole should be characterized considering**
 - **not only time-varying radio environment and**
 - **but also the primary user activity and the spectrum band information.**

Spectrum Sharing Process

- **Spectrum sensing**
- **Spectrum allocation**
 - The allocation not only depends on spectrum availability, but it is also determined based on internal (and possible external) policies.
- **Spectrum access**
 - The access should be coordinated in order to prevent multiple users colliding in overlapping portions of the spectrum.
- **Transmitter-receiver handshake**
- **Spectrum mobility**

Overview

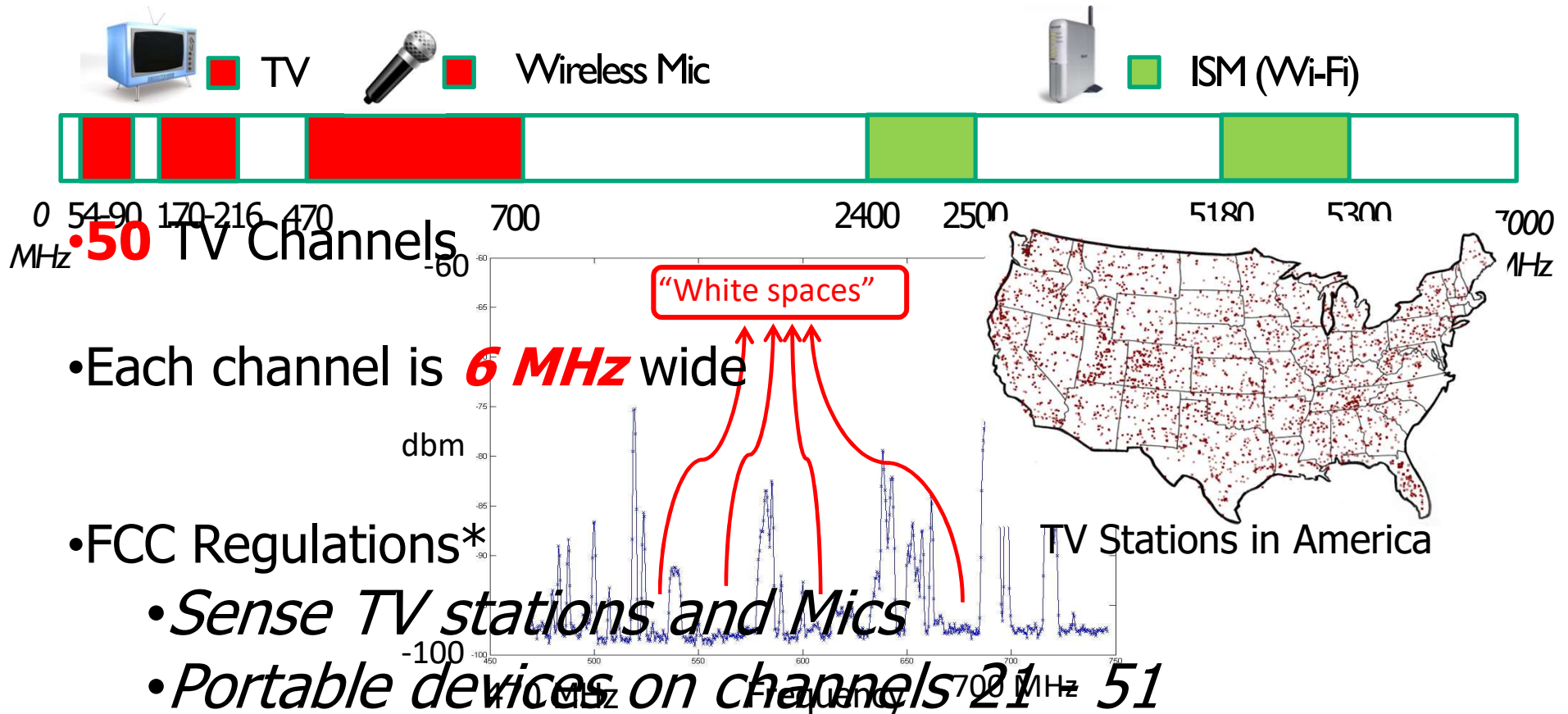
- **Spectrum use background**
- **Concepts and approaches**
- **DSA technologies**
- **Case study: TV white spaces**



TV White Spaces

- **TV channels are “allotted” to cities to serve the local area**
- **Other licensed and unlicensed services are also in TV bands**
 - **Wireless microphones**
- **“White Spaces” are the channels that are “unused” at any given location by licensed devices**
 - **FCC regulation allows access by unlicensed devices subject to many rules**

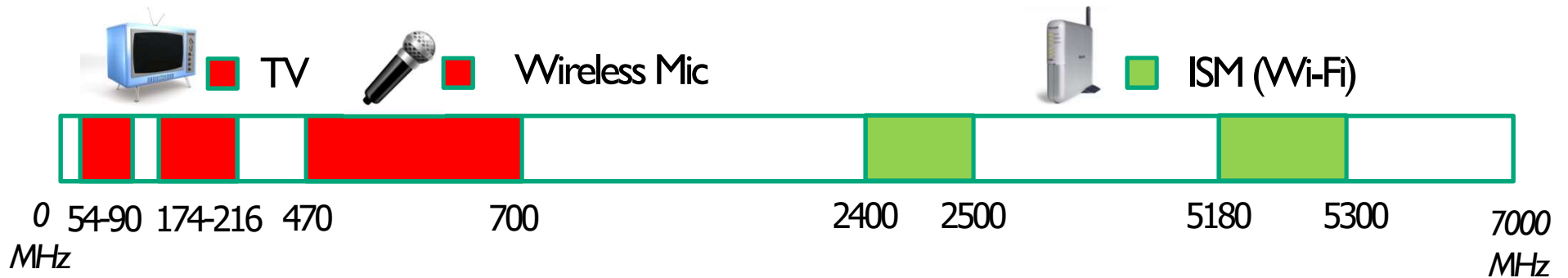
What are TV White Spaces?



White Spaces

are *Unoccupied* TV Channels

The Promise of White Spaces



Up to 3x of 802.11g

**More
Spectrum**

**Longer
Range**

at least 3 - 4x of Wi-Fi

Potential Applications

Rural wireless broadband
City-wide mesh

.....

.....

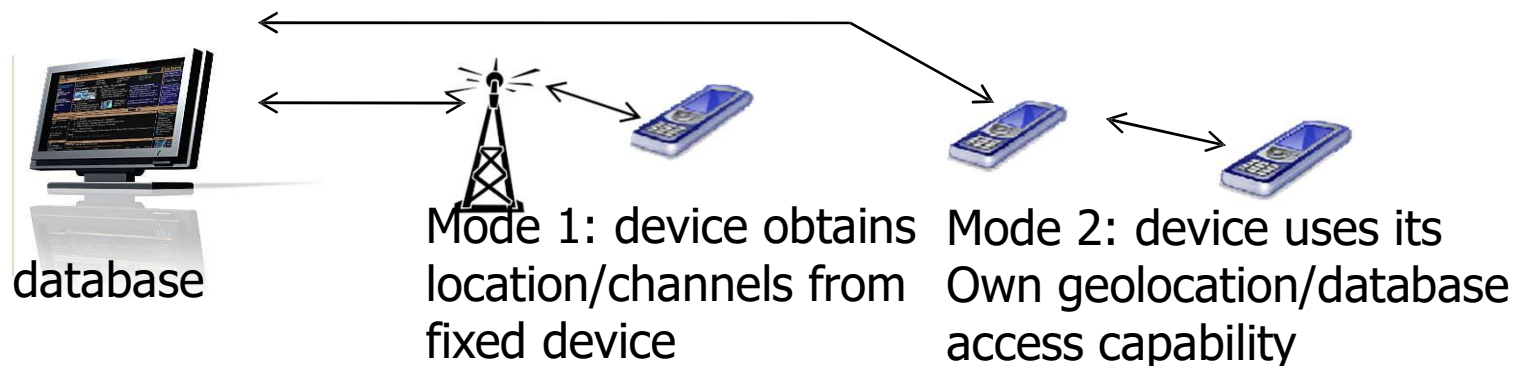
Why Using Geolocation & Database

- **Based on prototype test program sensing-only solutions not sufficiently developed**
 - Very long scan times, poor performance in presence of strong adjacent channel signal, ..
 - Difficult to reliably detecting wireless microphones
 - Inability to determine presence of passive receive sites
- **Disagreement on technical parameters for sensing**
 - What is detection threshold for determining presence of a signal? How is measurement accomplished? Type of detector
- **Tradeoff between continuing to develop sensing technology first vs. earlier deployment**
- **Requires geolocation capability in conjunction with a database to provide each device with a list of available channels specific to its location**

TV White Space Rules

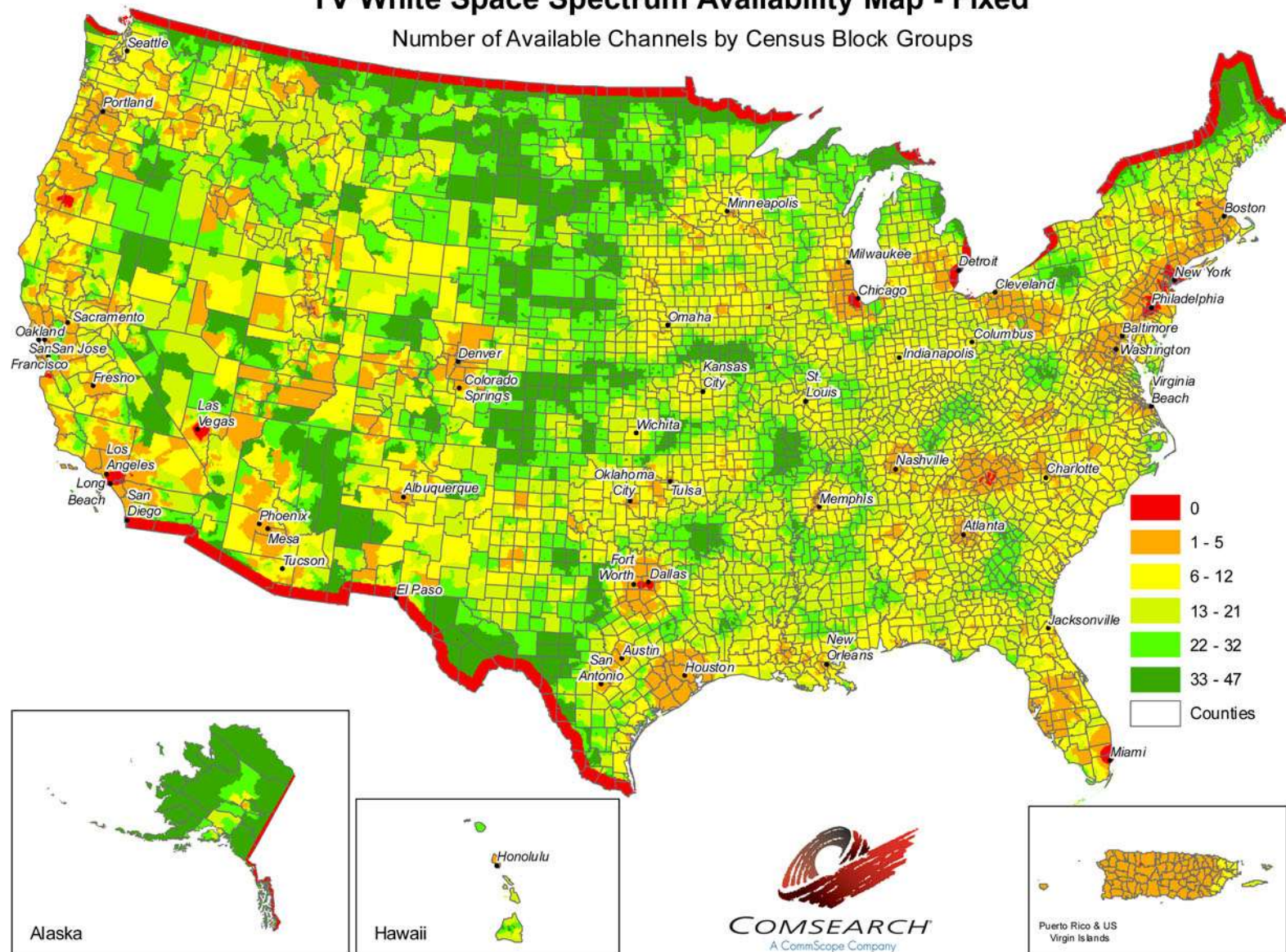
- **Final rules adopted 9/2010; modified 4/2012**
 - First new spectrum for unlicensed devices below 5 GHz in many years
 - Access based on geolocation & database
- **Incumbent services protect by database**
 - TV broadcast stations, translator and booster stations, cable TV headends, ..
 - Land mobile (in some cities); wireless mics

https://www.whitespaceforum.com/wsdb/wsdb_ui/Channel_Availability.html



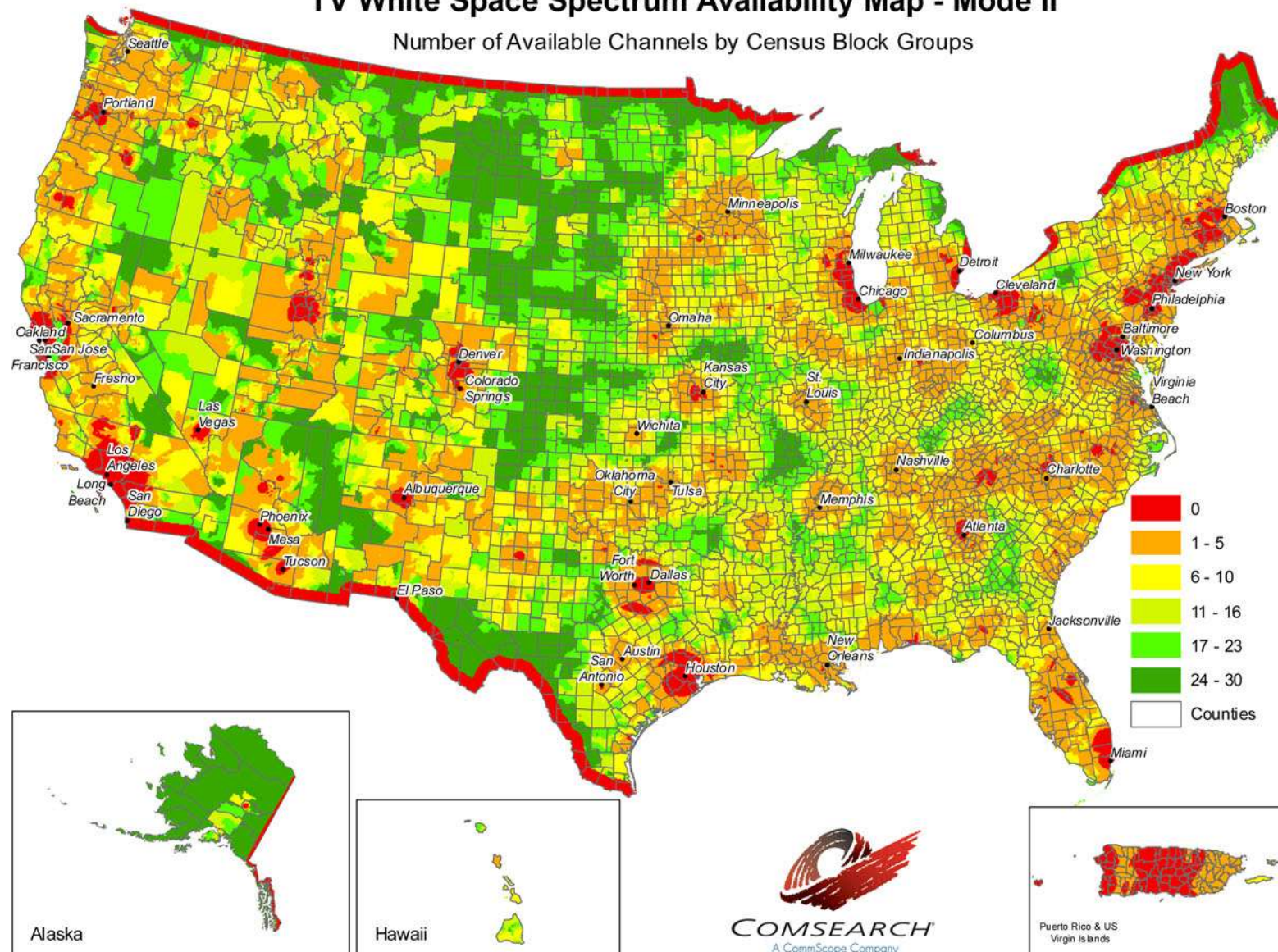
TV White Space Spectrum Availability Map - Fixed

Number of Available Channels by Census Block Groups



TV White Space Spectrum Availability Map - Mode II

Number of Available Channels by Census Block Groups



Standards for White Spaces

- **IEEE 802.11af: Wireless Local Area Network**
- **IEEE 802.22: Cognitive Wireless Regional Area Network**
- **IEEE 802.15.4m: Wireless Personal Area Network**
- **IEEE 802.19.1: Coexistence in white spaces**
- **IETF PAWS: Database access**
- **Other standards organizations:**
 - **ETSI BRAN: European Telecommunications Standards Institute Broadband Radio Access Networks**
 - **CEPT ECC SE43: European Conference of Postal and Telecommunications Administrations Electronics Communications Committee Spectrum Engineering**
 - **ITU-WP1B: International Telecommunication Union Working Party 1B – Spectrum Management Methodologies**

Coexistence Problem

- **Exposed Terminal:** 802.11af can not transmit because 802.22 keeps the channel busy
- **Hidden Terminal:** 802.11af interferes with 802.22 transmissions

802.22 Regional Area Network

