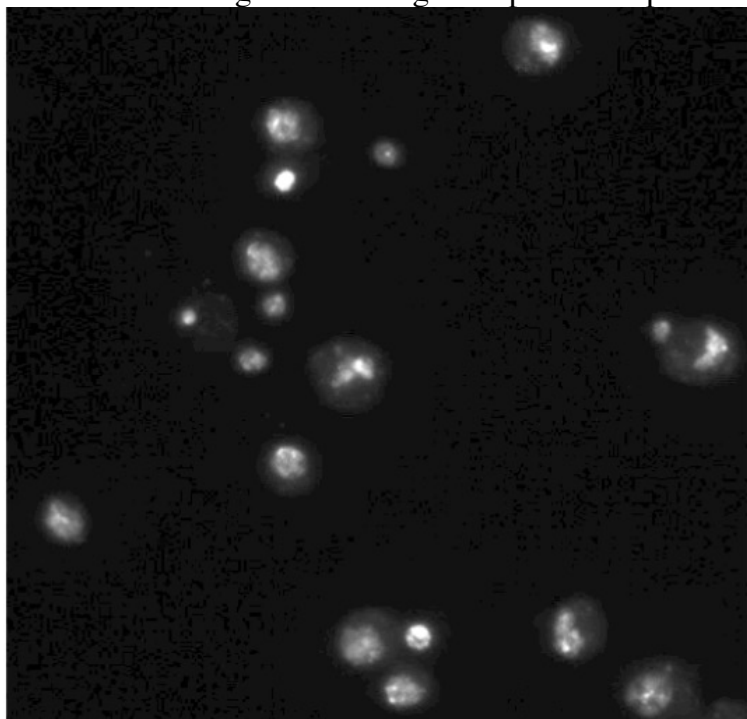
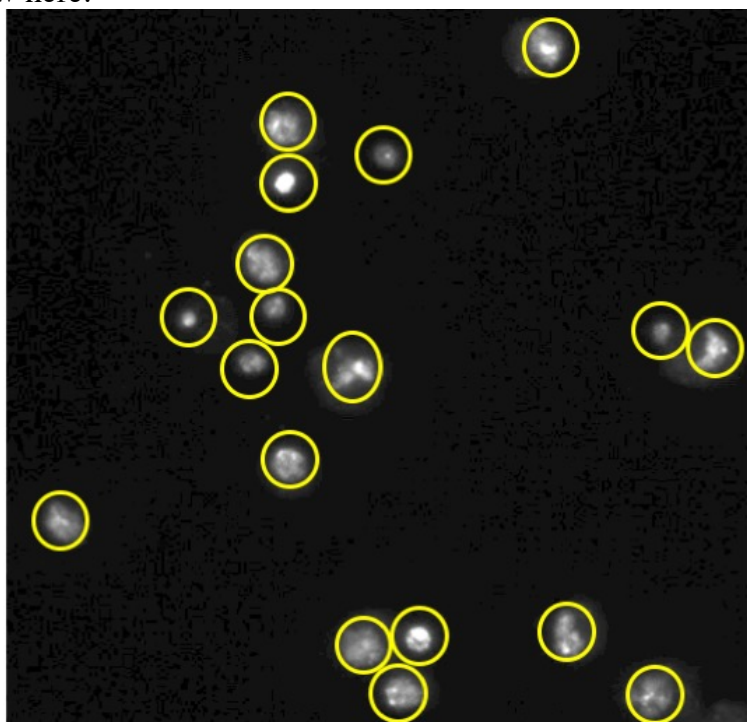


You will be shown images containing multiple "drosophila melanogaster" cells. Here is a sample image:



Each CONTIGUOUS BLOB in the image is a CELL. For example, each cell from the above image is circled yellow here:



In this task, you will be shown 11 pairs of such cell images. Your task is to identify the image with FEWER NUMBER OF CELLS in each pair.

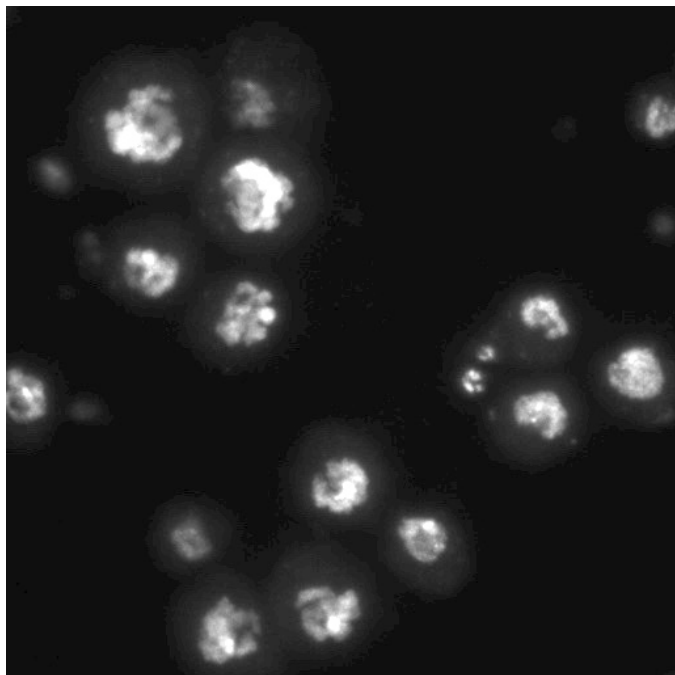
Important:

- Please maximize the brightness of your screen for maximum clarity.
- Please CAREFULLY answer **ALL ELEVEN** questions.
- Your pay will be DOUBLED for good work!

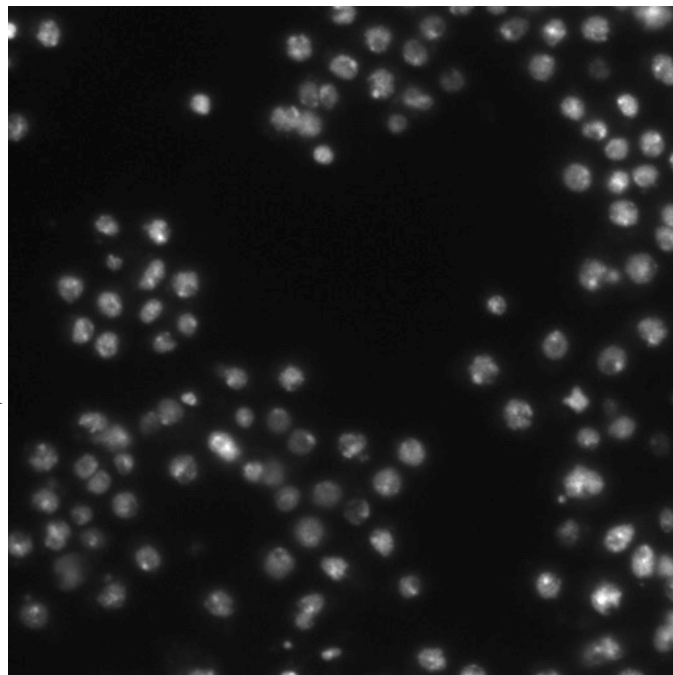
For each pair of images shown below, select the image that has **FEWER CELLS?**

Depending on the speed of your internet connection, the images may take a few seconds to load.

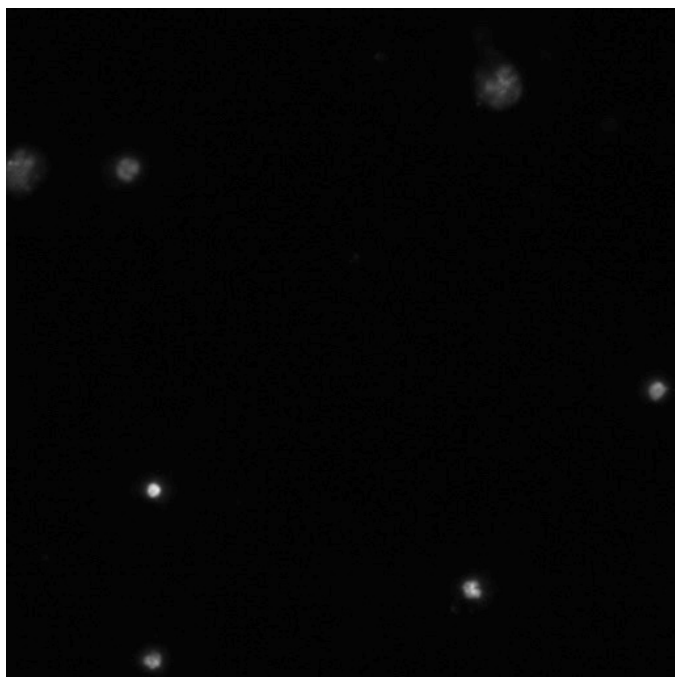
1.



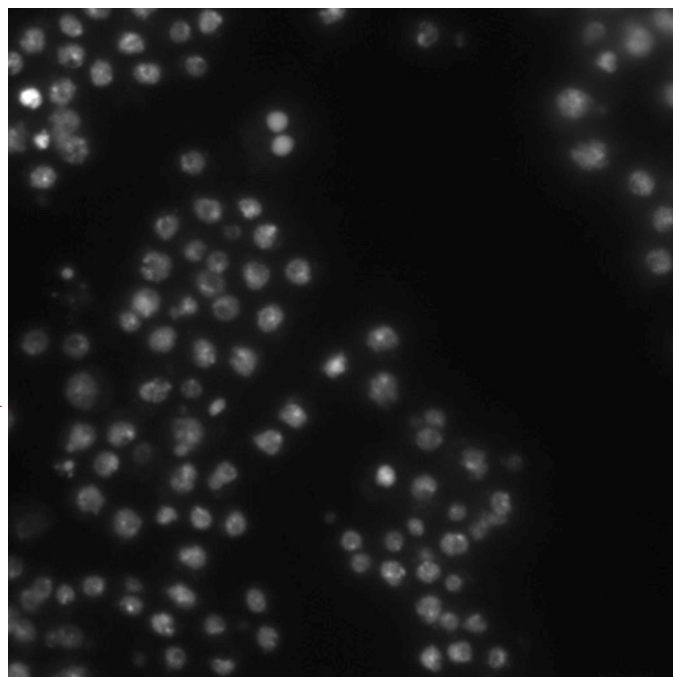
Which
image
has
FEWER
cells?



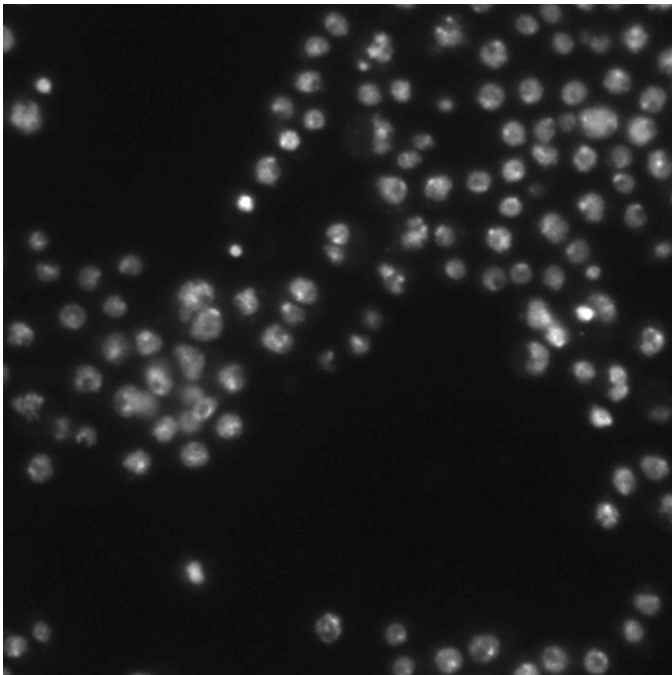
2.



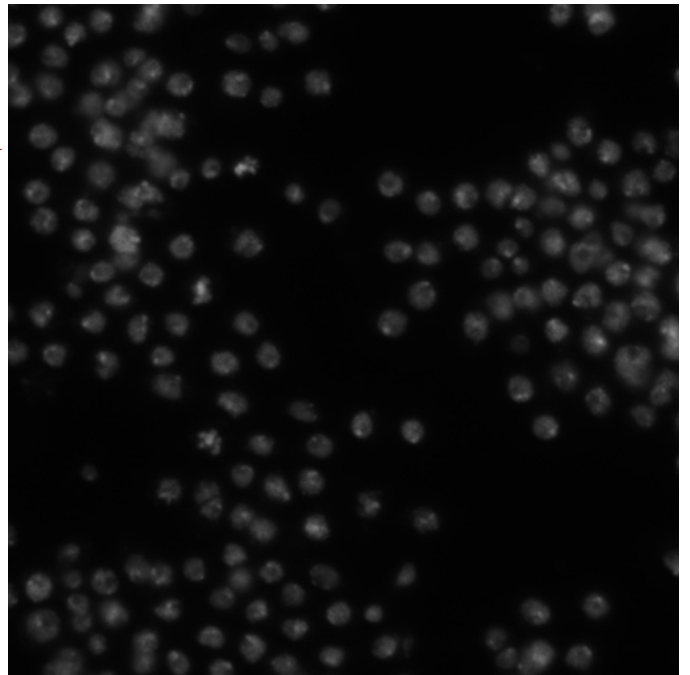
Which
image
has
FEWER
cells?



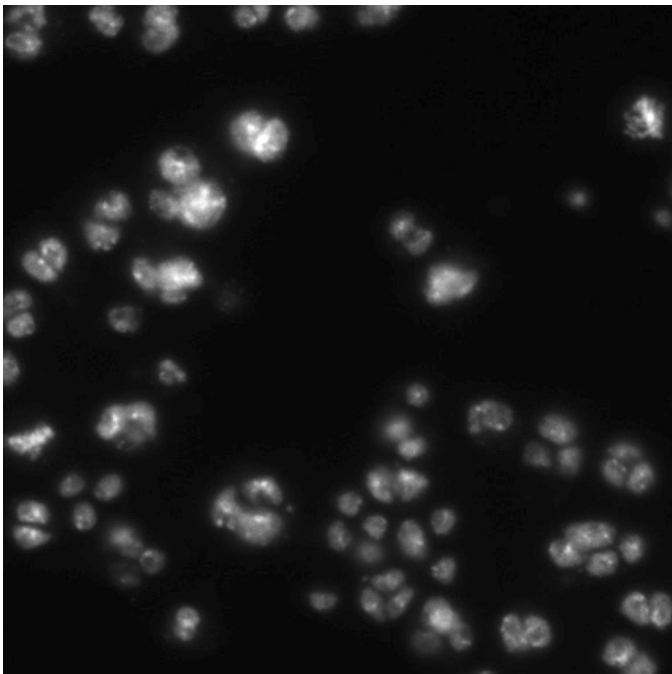
3.



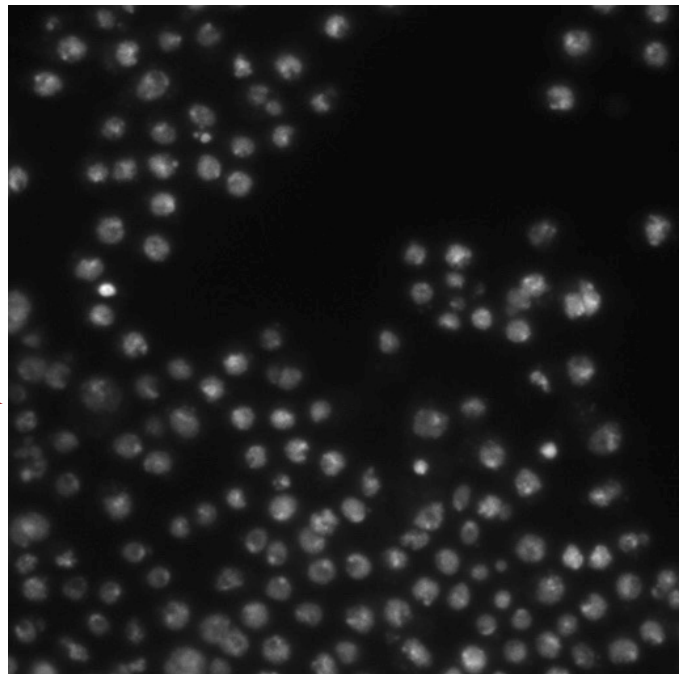
Which
image
has
FEWER
cells?



4.

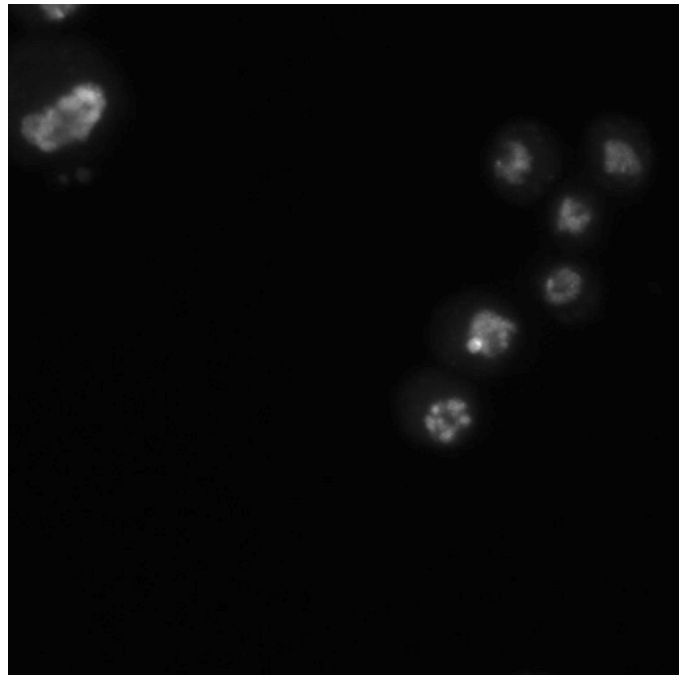
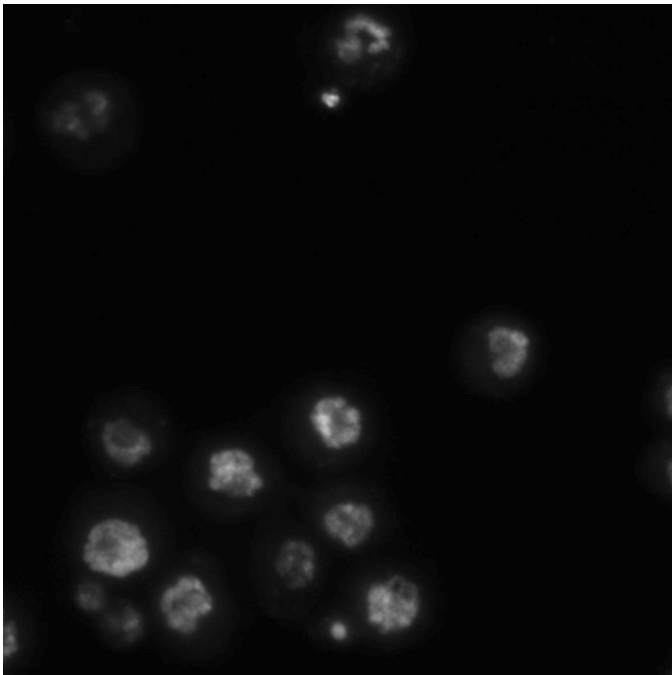


Which
image
has
FEWER
cells?

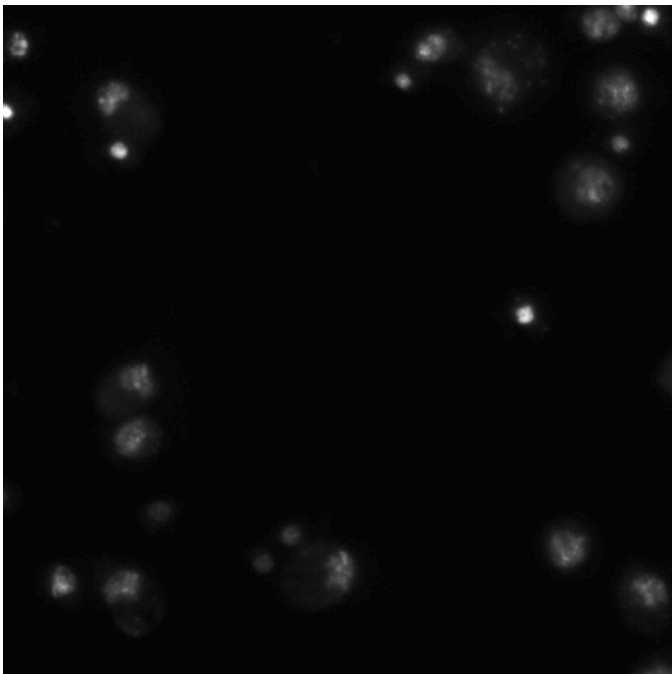


5.

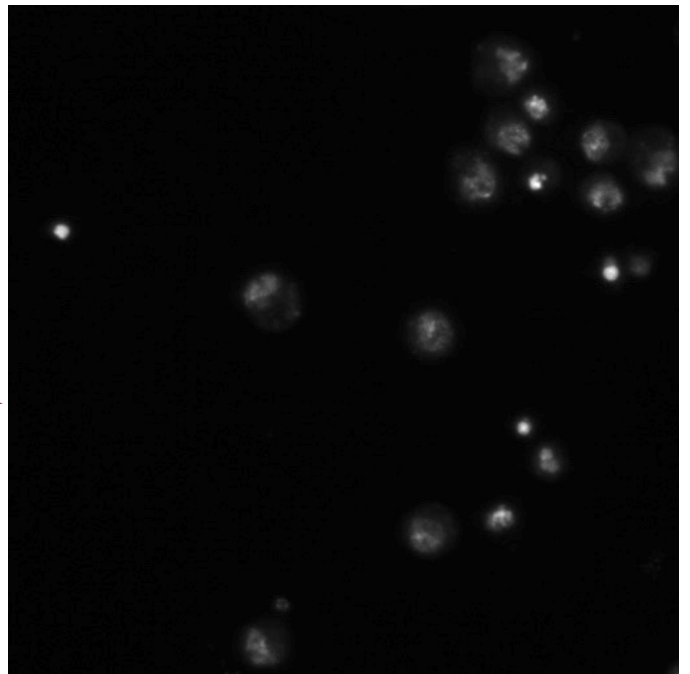
Which
image
has
FEWER
cells?



6.

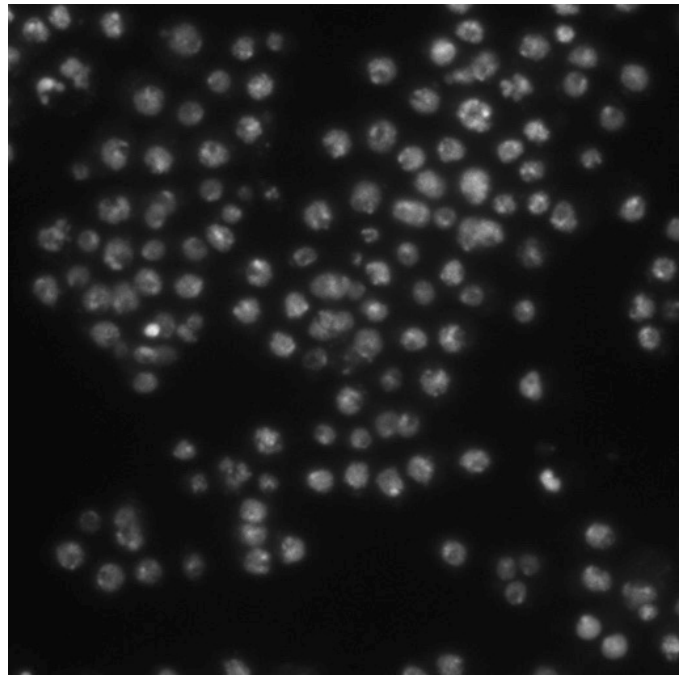
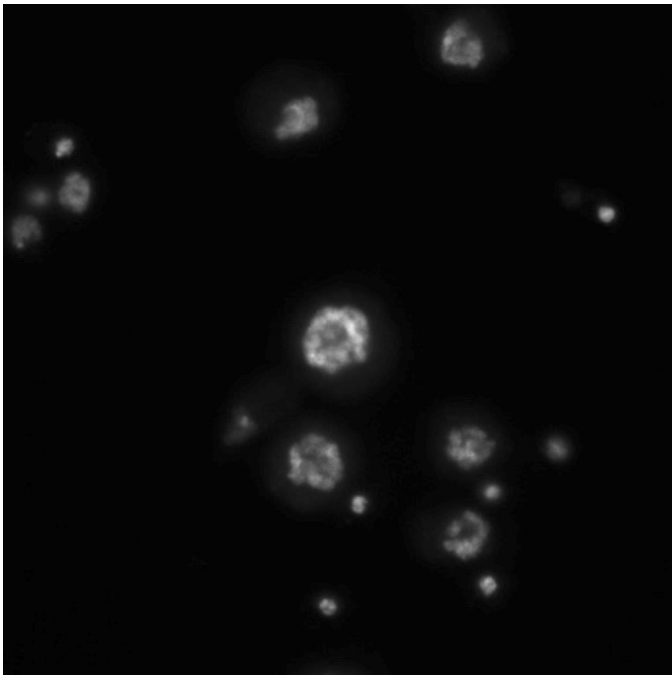


Which
image
has
FEWER
cells?

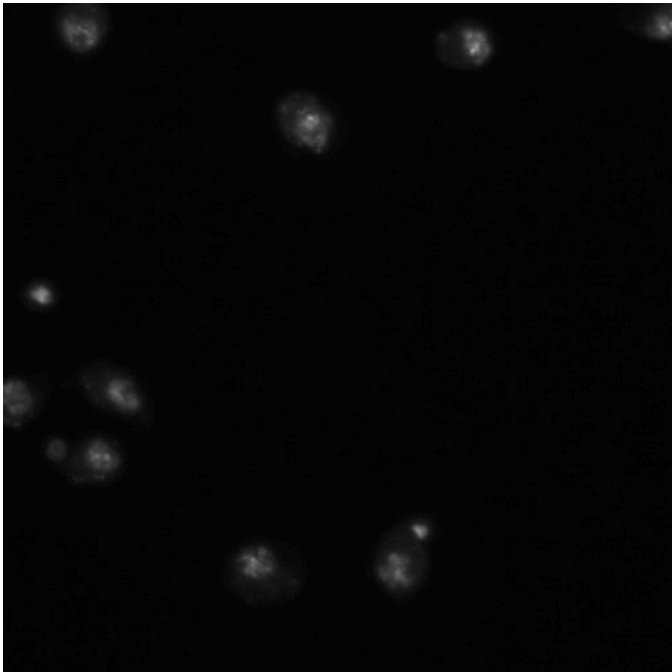


7.

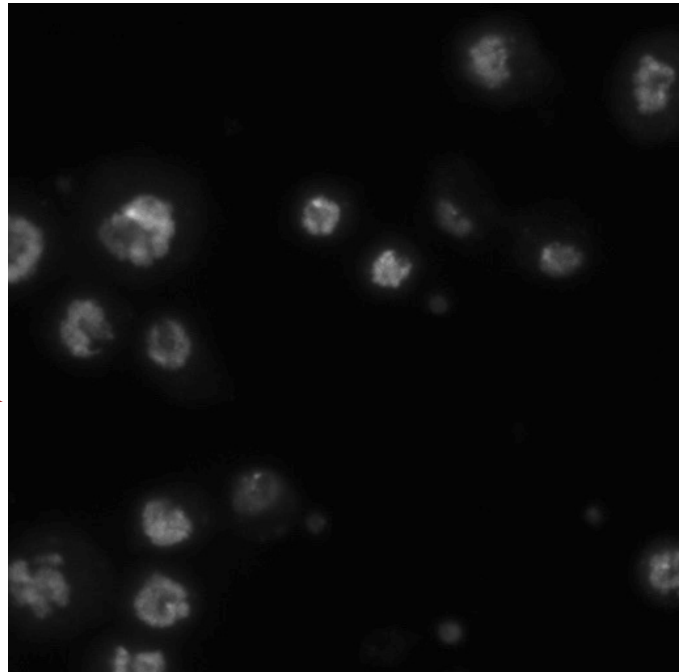
Which
image
has
FEWER
cells?



8.

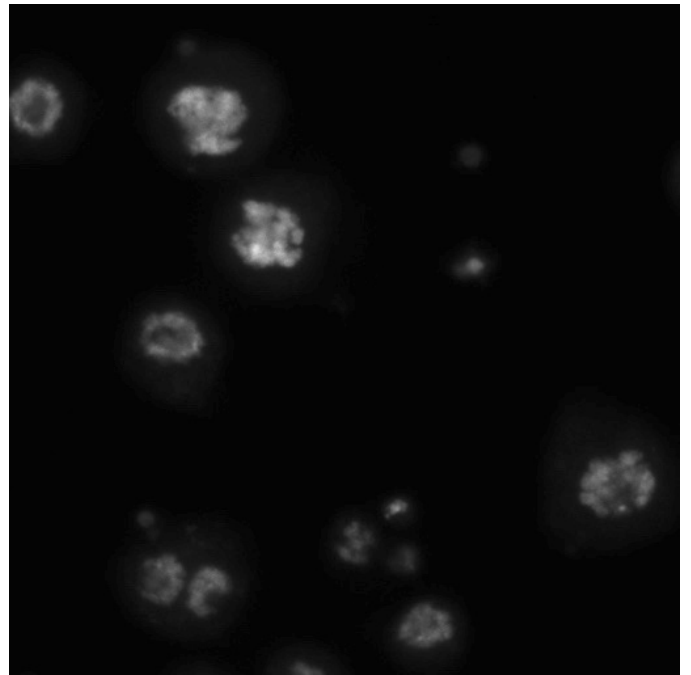
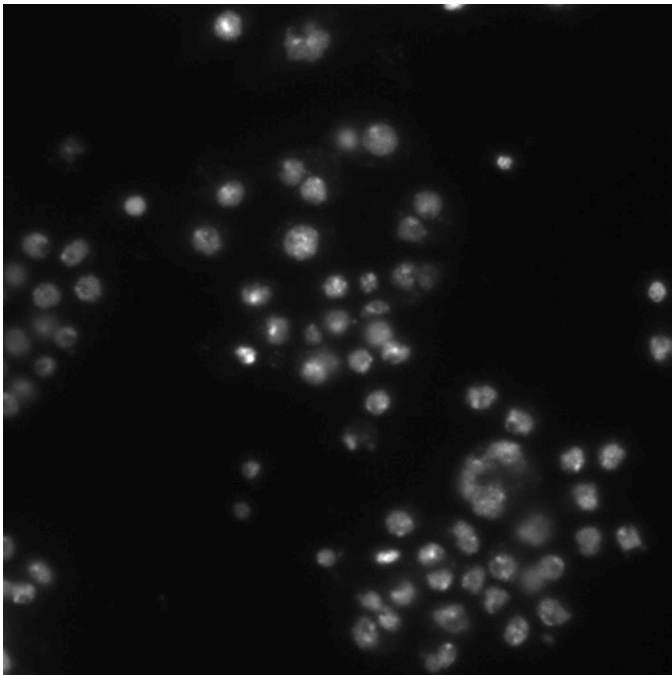


Which
image
has
FEWER
cells?

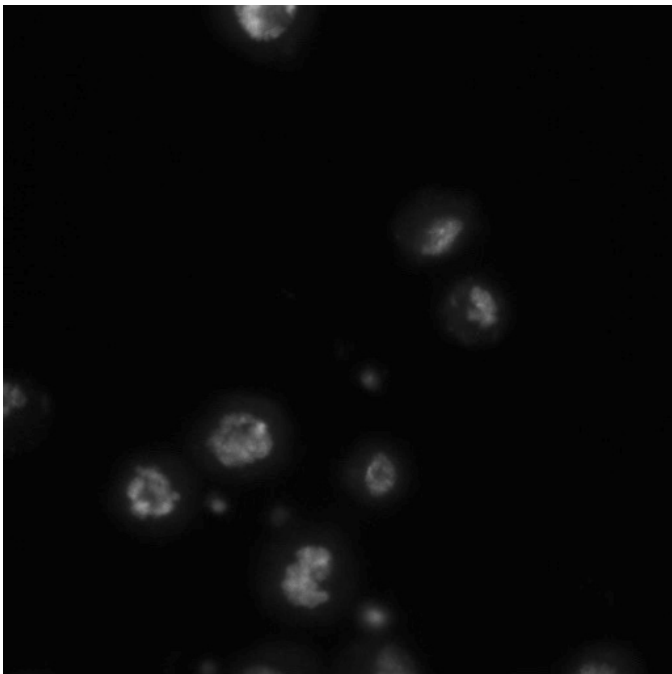


9.

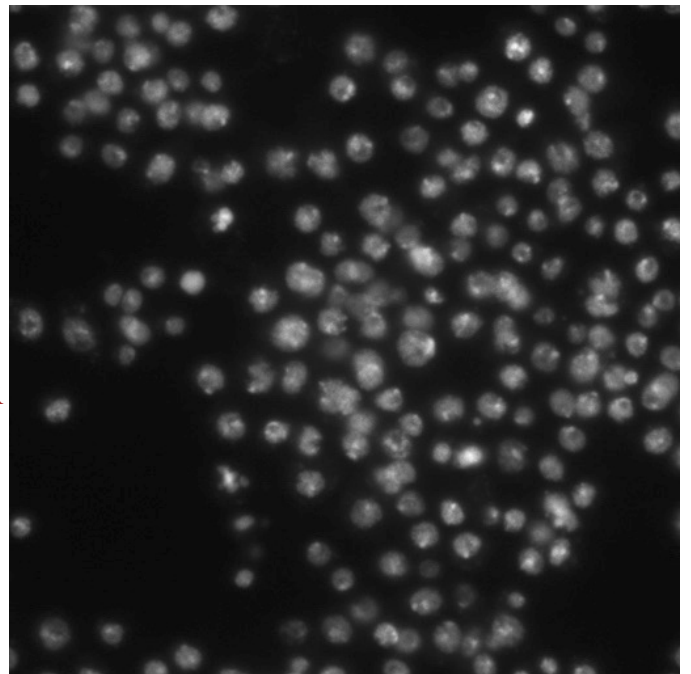
Which
image
has
FEWER
cells?



10.

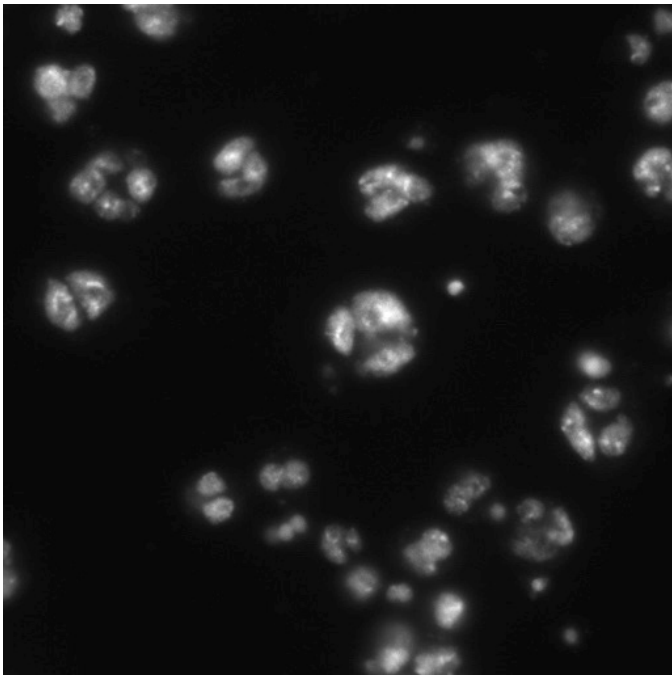


Which
image
has
FEWER
cells?

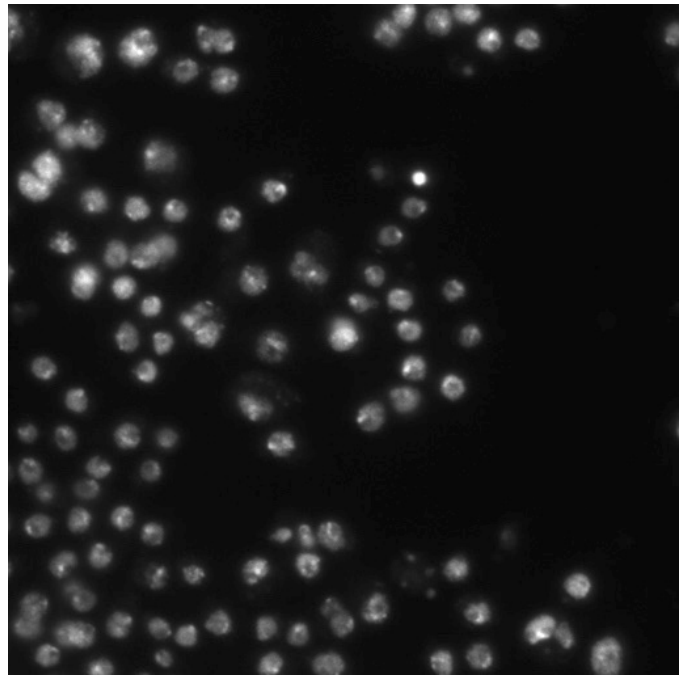


11.

Which
image
has
FEWER
cells?



○



○