

What is
computer vision?



What a person sees

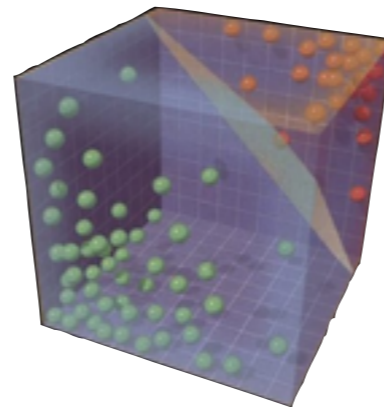


Why are we able to interpret this image?

The goal of computer vision is
to give computers
(super) human-level perception

typical perception pipeline

representation



'fancy math'



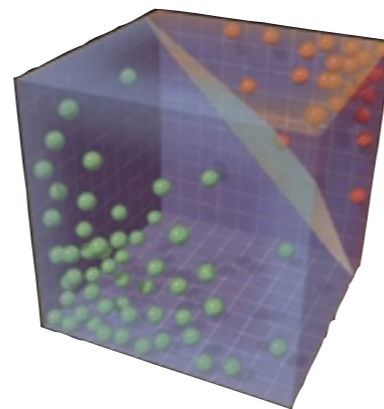
output

typical perception pipeline

representation



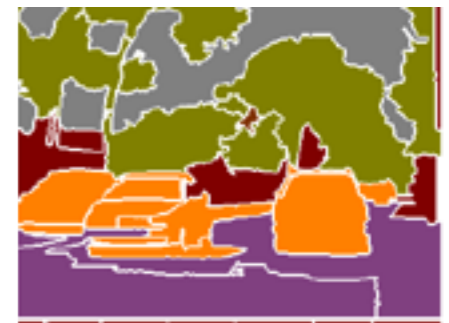
what should we look at?
(image features)



'fancy math'



output



what can we understand?
(semantic segmentation)

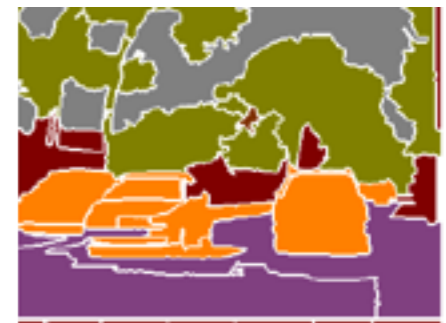
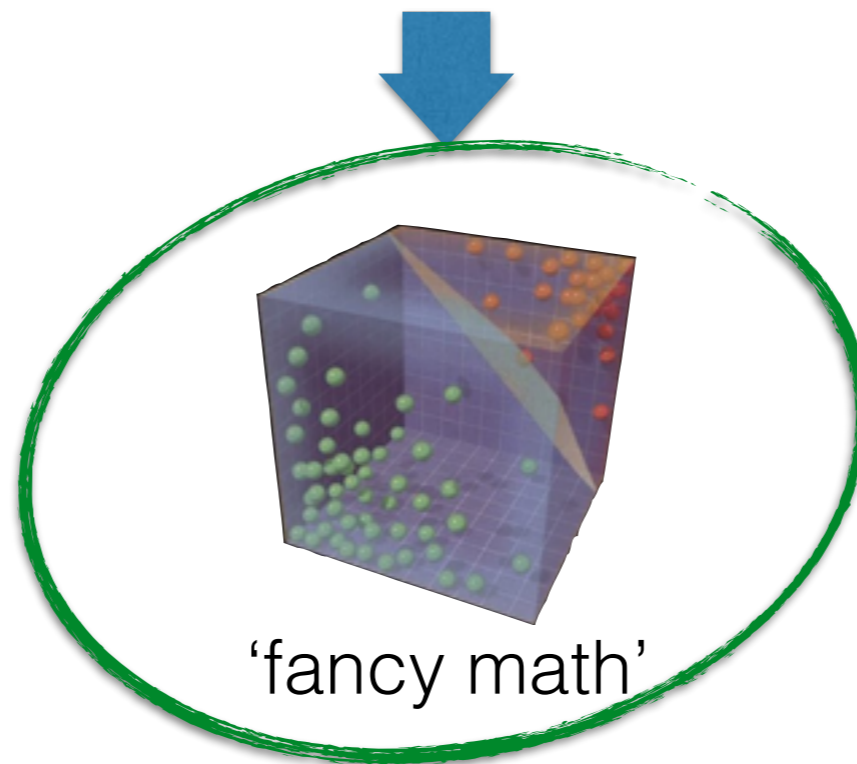
typical perception pipeline

representation



what should we look at?
(image features)

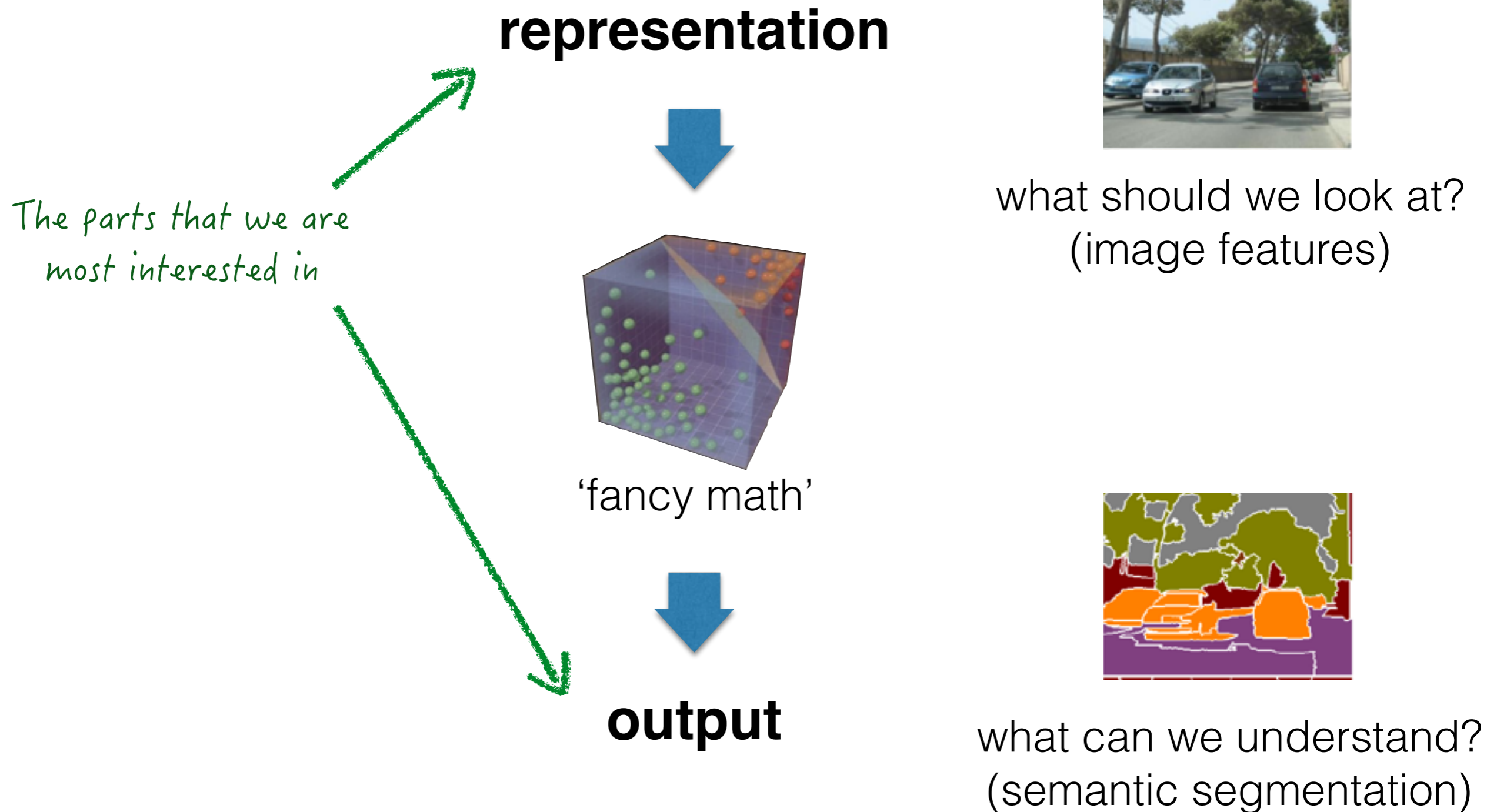
*easy to get lost in
the techniques*



what can we understand?
(semantic segmentation)

output

typical perception pipeline



Important note:

In general, computer vision does not work

Important note:

In general, computer vision does not work
(except in certain situations/conditions)