

15-462 Project 2: Geometry

Release Date: Tuesday, September 17th, 2013

Due Date: Tuesday, October 1st, 2013, 23:59:59

Starter Code:

<http://www.cs.cmu.edu/afs/cs/academic/class/15462-f13/www/project/p2.tar.gz>

1 Overview

In this project, you will have the opportunity to learn about and implement texture mapping and to learn and implement a subdivision algorithm. Specifically, you will use the loop subdivision algorithm. You will be adding code to texture map meshes and will be adding a method which will subdivide the mesh and modify the mesh you are rendering accordingly. This document, the subdivision lecture and chapter 9 of the Red Book (Version 1.1) will be extremely helpful as they should cover everything you need for this assignment.

2 Description

In the previous project, you implemented a class to render 3D meshes. In this assignment, you will first render a 3D mesh with a texture map on it and then you will add a method that will subdivide a given mesh and make it more refined with each iteration of the subdivision.

Subdivision is a technique which aims to increase the quality of a mesh by generating additional vertices. Surface subdivision is a recursive process. The process starts with a given polygonal mesh and with each iteration, a refinement scheme is applied to the mesh. New vertices and faces are created based on the vertices around them. Some refinement schemes (like the one you will be implementing), then take the old vertices and modify them as well. This allows one to start with a very coarse mesh and procedurally create something much more smooth.

As always, we will direct you towards resources for help, but if you need further clarification or have a question, the best place to go is to the piazza page for this course (<https://piazza.com/class#fall2013/15462/>). For this particular assignment, the subdivision lecture and this document will be the most helpful resources.

3 CMake

In order to ease the process of running on different platforms, we will be trying out CMake (<http://www.cmake.org/>) for this project. Here is a description from the CMake wiki:

CMake is used to control the software compilation process using simple platform and compiler independent configuration files. CMake generates native makefiles and workspaces that can be used in the compiler environment of your choice.

3.1 How to use CMake

You will use CMake to generate the build system for your project. These are the instructions for using CMake on the GHC 5xxx machines (these will work for any Linux flavor and OSX as well). Consult the README for Windows instructions.

1. After untar-ing the project handout, run the following commands in the root of the project:

```
$ cd build
$ cmake ../src
```

All build files are now in build/. You only need to perform this step once.

2. Write some code.
3. Build your code.

```
$ cd build/
$ make install
$ cd ../
```

4. Run your code.

```
$ ./p2 models/bunny.obj
```

5. Return to step 2.

Warnings:

1. Your code must run on the GHC 5xxxx cluster machines. Do **not** wait until the submission deadline to test your code on the cluster machines.
2. If you run `make` instead of `make install` the executable will not be copied to the project root (from `build/p2/`). If you build your code and you aren't seeing your changes on screen then maybe you ran `make` instead of `make install`.

Keep in mind that there is no perfect way to run on arbitrary platforms. CMake does not install libraries or headers for you. If you experience trouble building on your computer, the GHC 5xxx machines will always work and we recommend you work on them.

4 Submission Process and Handin Instructions

Failure to follow submission instructions will negatively impact your grade.

1. Your handin directory may be found at one of the two directories below, depending on which class you are enrolled in. Graduate students should be enrolled in 15-662 and undergraduates in 15-462.

```
/afs/cs.cmu.edu/academic/class/15462-f13-users/andrewid/p2/.
```

```
/afs/cs.cmu.edu/academic/class/15662-f13-users/andrewid/p2/.
```

All your files should be placed here. Please make sure you have a directory and are able to write to it well before the deadline; we are not responsible if you wait until 10 minutes before the deadline and run into trouble. Also, remember that you must run `aklog cs.cmu.edu` every time you login in order to read from/write to your submission directory.

2. You should submit all files needed to build your project, as well as any textures, models, shaders, or screenshots that you used or created. Your deliverables include:
 - `src/` folder with all `.cpp` and `.hpp` files.
 - CMake build system.
 - `writeup.txt`
 - Any models/textures/shaders needed to run your code.
3. Please **do not** include:
 - Anything in the `build/` folder
 - Executable files
 - Any other binary or intermediate files generated in the build process.
4. Do not add levels of indirection when submitting. For example, your source directory should be at `.../andrewid/p2/src`, **not** `.../andrewid/p2/myproj/src` or `.../andrewid/p2/p2.tar.gz`. Please use the same arrangement as the handout.
5. We will enter your handin directory, and run `cd build && rm -rf * && cmake ../src && make`, and it should build correctly. **The code must compile and run on the GHC 5xxx cluster machines.** Be sure to check to make sure you submit all files and that it builds correctly.
6. The submission folder will be locked at the deadline. There are separate folders for late handins, one for each day. For example, if using one late day, submit to `.../andrewid/p2-late1/`. These will be locked in turn on each subsequent late day.

5 Required Tasks

Input: The input is a virtual camera, a loaded mesh, and a texture filename. Sometimes the texture filename is null, in which case no texture should be rendered.

Output: The output should be a rendering of the mesh using the given camera and texture. With each press of the ‘r’ key, the mesh should be subdivided using the loop subdivision algorithm. See the end of the document for some sample outputs.

For your program, you must:

- Correctly set the projection and modelview matrices based on the camera’s values. The user should be able to move the camera around with the mouse and keyboard.
- Correctly render the mesh (very similar to the previous project).
- Use OpenGL fixed-functionality to add lights to the scene and correctly shade the scene with materials.
- Subdivide each face of the mesh using the loop subdivision algorithm. This includes calculating the new positions, normals and texture coordinates.
- Render the mesh with textures when a texture filename is provided.
- If you are in 15-662, you must do at least one of the Extra Credit items detailed in Section 9.
- Submit a few screen shots of your program’s renderings.
- Fill out `writeup.txt` with details on your implementation.
- Use good code style and document well. We *will* read your code.

At a minimum, you must modify `project.cpp` and `project.hpp` in `src/p2/` and `writeup.txt`, though you may modify or add additional source files.

`writeup.txt` should contain a description of your implementation, along with any information about your submission of which the graders should be aware. Provide details on which methods and algorithms you used for the various portions of the lab. Essentially, if you think the grader needs to know about it to understand your code, you should put it in this file. You should also note which source files you edited and any additional ones you have added.

Examples of things to put in `writeup.txt`:

- Mention parts of the requirements that you did not implement and why.
- Describe any complicated algorithms used or algorithms that are not described in the book/hand-out.
- Justify any major design decisions you made, such as why you chose a particular algorithm or method.
- List any extra work you did on top of basic requirements of which the grader should be aware.

5.1 Starter Code

It is recommended that you begin by first reviewing the starter code provided. We are providing you with a large code base to get you started and handle more mundane application tasks. Most of this is identical to the previous lab, only with necessary changes for the lab. The `README` gives a breakdown of each source file.

5.2 Building and Running the Code

This project uses the CMake build system (www.cmake.org). CMake is a kind of “meta build-system,” in that it creates a build system for you. It supports many different build systems, ranging from Unix Makefiles to Visual Studio projects to XCode projects.

- If you don’t have CMake installed, you should install it. If you’re running Linux, it should be available through your distro’s package manager (`apt-get`, `pacman`, `ports`, etc). Windows and OSX installers can be downloaded from <http://www.cmake.org/cmake/resources/software.html>
- Open up a command prompt in the `build` directory and run `cmake ../src`. CMake will generate the build system in the `build` directory. By default, CMake will generate Makefiles on Linux and OSX and a Visual Studio project on Windows. If you’d like to change that, you can pass a different “generator” to `cmake` with the `-G` flag. A full list of generators can be found at the bottom of the output generated by running `cmake`. For example, `cmake -G 'Xcode' ../src` will generate an Xcode project on OSX.
- You can now use the build system in the `build` directory. The default target will compile everything for you, and the `install` target will copy the p2 executable to the main p2 directory.

More details are in the `README`. If you use Windows, your project still **must** build and run on GHC Linux machines, so you will still have to test it on them before submitting. There are some differences in the compilers, so **code that compiles and works with Visual Studio may not compile or run correctly with GCC**. Make sure you test it well before the deadline. Be sure not to submit Windows binaries, either.

The program takes 1 required argument and 1 optional argument. The required argument is the filename of the mesh that will be subdivided. The optional argument is the filename of a texture to use. The starter code will load the mesh for you, then give you the loaded mesh and the texture filename. If the mesh does not contain texture coordinates or no texture was given, then no texture filename will be provided. See `p2/project.cpp` for more information.

You can move the virtual camera with `'wasd'` and the mouse, as before. The `'r'` key performs a single subdivision, and the `'f'` key takes a screenshot.

5.3 What You Need to Implement

`p2/project.cpp` and `p2/project.hpp` are the two primary files that should be modified for your implementation, but you may add/modify other files if necessary. The specification for each function you need to write is given in `p2/project.cpp`. These closely resemble the first project, though there is a new function you must implement, `subdivide`, which is invoked when the 'r' key is pressed. We handle the key press for you; you merely have to implement `subdivide` to perform one iteration of the loop subdivision algorithm.

We give you a handful of models in the `models` folder and some textures in the `textures` folder. Only some models have texture coordinates and therefore not all models can use textures. A text file in the `models` folder details which models have texture coordinates.

6 Grading: Visual Output and Code Style

Your project will be graded both on the visual output (both screenshots and running the program) and on the code itself. We will read the code.

In this assignment, part of your grade is on the quality of the visuals, in addition to correctness of the math. So make it look nice. Extra credit may be awarded for particularly good-looking projects.

Part of your grade is dependent on your code style, both how you structure your code and how readable it is. You should think carefully about how to implement the solution in a clean and complete manner. A correct, well-organized, and well-thought-out solution is better than a correct one which is not.

We will be looking for correct and clean usage of the C language, such as making sure memory is freed and many other common pitfalls. These can impact your grade. Additionally, we will comment on your C++-specific usage, though we will generally be more lenient with points (at least earlier in the semester). More general style and C-specific style (i.e., rules that apply in both C and C++) will, however, affect your grade.

Since we read the code, please remember that we must be able to understand what your code is doing. So you should write clearly and document well. If the grader cannot tell what you are doing, then it is difficult to provide feedback on your mistakes or assign partial credit. Good documentation is a requirement.

7 Implementation Details

As usual, the Red Book will be a useful resource, particularly the chapter on texture mapping.

7.1 Mesh and Scene Details

The initialization function provides all data you will need about the scene:

```
bool initialize( const Camera* camera, const MeshData* mesh,
                const char* texture_filename )
```

`camera` is the camera for the scene. It behaves exactly like the previous project.

`mesh` contains all the attribute data for the mesh. Meshes are in a similar format to the previous lab, with an array of vertices and an array of triangles with indices. The structs are defined in `p2/project.hpp`. For this assignment, normals will be given to you for each vertex, along with position data. You **should not** compute the normals yourself until you begin subdivision. Some of the meshes also have texture coordinate data for each vertex. In those cases, you should render the mesh with a texture. Not all meshes we provide have texture-coordinate data, in which case the mesh we give you will have the zero vector for every texture coordinate.

`texture_filename` is the filename of the texture to use. This will be null if no texture was specified or if the mesh has no valid texture coordinates. Only use texturing if the texture filename is not null.

Note: Conveniently, you can still pass in texture coordinate data even if texturing isn't enabled, in which case OpenGL will simply ignore it. So you can use the same rendering code for both textured and untextured meshes.

7.1.1 Transformations and Shading

We still provide with a camera that you must obey, and it should still move around with the keys and mouse similarly to the previous project. You must use texturing with the given texture filename when the filename is not null. Place at least one light in the scene, and use the same Blinn-Phong lighting used in the previous lab.

Everything else with transformations and lighting is up to you, though here are a few suggested guidelines. Note these aren't requirements, just suggestions.

- Leave the object without additional transformations besides the camera.
- Set the light color to whatever you like.
- When texturing is not used, set the material properties to whatever you like.
- When texturing is being used, leave the ambient and diffuse material completely white.

7.2 Texture Mapping

Texture mapping essentially allows you to glue a 2D image onto some set of polygons that are being rendered. The texture (specified as a 2D array of 4-byte pixels) is assigned a coordinate system in two dimensions, from (0,0) on the bottom left to (1,1) on the top right. Similar to specifying normals or other attributes, you will specify texture coordinates for every vertex of the mesh and OpenGL will then sample the texture based on these coordinates. Carefully look through Chapter 9 in the Red Book so that you understand texture mapping.

OpenGL supports 2, 3, or 4 dimensional texture coordinates for various uses. In our case, we'll only need 2-dimensional textures, so you only need to read sections pertaining to 2D textures.

7.2.1 Loading in the PNG for texturing

We provide you a routine to load PNG images into a suitable format. Within `application/imageio.hpp`, there is a function named `imageio_load_image`. It returns array of bytes in RGBA format, along with width and height information. That is, the first 4 values are the RGBA values of the first pixel, the next four values are the RGBA values of the second pixel and so on.

Note: `imageio_load_image` uses `malloc` to allocate space for the data, so be sure to free it. Once the texture is loaded into OpenGL, it is safe to free the loaded image data.

7.2.2 Creating an OpenGL Texture

Consult the Red Book for more details on this section. This is just an overview.

OpenGL manages textures (as well as several other kinds of objects) using a handle-based system. You can create a "texture object" using `glGenTextures` which will give you an integer handle for that texture.

Like everything else in OpenGL, the current texture is part of the state, so you must bind your texture handle using `glBindTexture`. Then, all texture functions affect the current texture. You can change various setting for the current texture and, most importantly, load in texture data using `glTexImage2d`. One of the arguments for this texture is the input format. For images loaded using

`imageio`, use the format `GL_RGBA`. You must also specify a filtering mode using `glTexParameteri`. Consult the Red Book for details.

7.2.3 Specifying Texture Coordinates

Texture coordinates are specified in the same manner as other vertex data. For example, you can use `glTexCoord` in `begin/end` pairs or `glTexCoordPointer` with vertex arrays. The interface is very similar to that for normals.

7.3 Loop Subdivision Algorithm

7.3.1 Overview

You will be implementing the Loop subdivision algorithm for this project. It is a two-pass algorithm: the first pass creates all the new points and triangles, and the second refines all the old points that were not created during the first pass. It is an *approximating* algorithm, which means that the existing vertices are modified during subdivision.

The Loop subdivision scheme can only be applied to triangular meshes, but this isn't really an issue since a mesh of arbitrary polygons can be transformed into a triangular mesh by splitting faces. Anyway, in this project, all meshes are already triangles.

First we'll define several terms relevant to the algorithm. *Odd vertices* are those that are added during the subdivision, while *even vertices* are those that existed prior to the subdivision. *Boundary edges* are edges that lie on the "boundary" of the mesh. More specifically, if there exists an triangle edge ab that is shared with no other triangle, it is a boundary edge. The vertices a, b can be described as being boundary vertices. *Interior edges* are the complementary set: any edge shared by at 2 triangles. An interior vertex lies on only interior edges.

Boundary and interior edges are handled differently in order to preserve the features of the boundary. It's also possible to treat some interior edges as boundary edges to preserve features and prevent smoothing. These are called *crease edges*. However, you do not have to deal with crease edges in this project.

Note: You may assume for this implementation that all edges are shared by at most two triangles. The algorithm only works if this condition holds, which does hold for all meshes we provide.

7.3.2 Odd Vertices

As a reminder, odd vertices are the vertices added during the subdivision. They are added on the first pass. We add a new vertex v for every edge ab , where a, b are vertices. We first compute the position for v , then split the edge to make 2 new edges, av and vb . The new vertex v is computed as a linear combination of the vertices on the surrounding triangles.

If ab is an interior edge, equation 1 gives us the position of v , where the 2 triangles sharing the edge ab are (a, b, c) and (b, a, d) . The upper-left picture in figure 1 illustrates this.

$$v = \frac{3}{8}a + \frac{3}{8}b + \frac{1}{8}c + \frac{1}{8}d \tag{1}$$

Equation 2 gives us the position of v for when ab is a boundary edge. The lower-left picture in figure 1 illustrates this.

$$v = \frac{1}{2}a + \frac{1}{2}b \tag{2}$$

This step divides each triangle of the mesh into 4 new triangles.

7.3.3 Even Vertices

Even vertices, the vertices that existed before the subdivision, are handled on the second pass. So for each even vertex v we will compute a new position v' as a linear combination of some of its neighbors.

Note: The neighbors here refer to the old neighbors of the even vertices, not the new neighbors formed in the first pass. Let \mathcal{N} be the set of neighbors of v , which are all vertices that share an edge with v .

Equations 3 and 4 describe how to compute v for interior vertices. The upper-right section of figure 1 illustrates this. v and all its neighbors are used in the weighting.

$$\beta = \frac{1}{|\mathcal{N}|} \left(\frac{5}{8} - \left(\frac{3}{8} + \frac{1}{4} \cos \frac{2\pi}{|\mathcal{N}|} \right)^2 \right) \quad (3)$$

$$v' = (1 - \beta|\mathcal{N}|)v + \beta \sum_{u \in \mathcal{N}} u \quad (4)$$

For boundary vertices, you only use the points on the boundary itself. Equation 5 describes the computation, where a and b are the 2 neighbors that lie on the boundary edges of v . The lower-right section of figure 1 illustrates this.

$$v' = \frac{3}{4}v + \frac{1}{8}a + \frac{1}{8}b \quad (5)$$

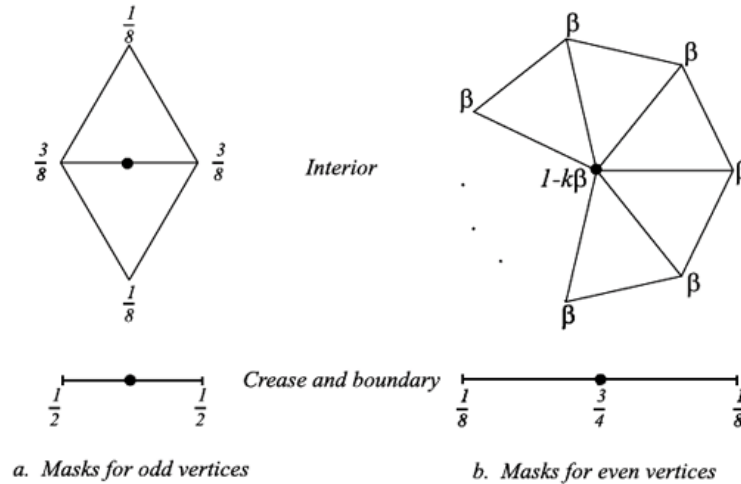


Figure 1: Illustration of the algorithm

7.3.4 Normals and Texture Coordinates

For the purpose of this assignment, you can use the same algorithm to calculate the new normals and the new texture coordinates of the vertices. In general however, subdivision algorithms may use a separate formula to compute tangent vectors of adjacent faces and then just cross them to get a new normal which is computationally less expensive than averaging the normals.

7.4 Suggested Sequence

We suggest you to implement the assignment in the following order. Note that the subdivision portion is worth a far greater percentage of the grade than texturing. However, do not neglect texturing if you get stuck on part of subdivision.

1. Familiarize yourself with the changes to the given mesh structure.
2. Add in code for camera transformations, mesh rendering, and some lighting (you can probably just recycle this from the last assignment).
3. Implement the interior case of the odd vertices for the loop subdivision algorithm.
4. Implement the interior case of the even vertices for the loop subdivision algorithm. At this point, you should be able to subdivide the cube, torus and bunny which have no boundaries.
5. Implement the boundary case for odd and even vertices. At this point, you should be able to subdivide all of the meshes (including the open cube and the stegosaurus).
6. Add texture mapping. You should now be able to render `bunnytex.obj`.

Note: For grading, we will normally do around 3 - 4 subdivisions on simple models and 2 subdivisions for more complex model such as stegosaurus. The subdivisions need not be uber fast, but should be of reasonable speed (less than a minute etc).

Note: We will also be comparing the time performance of each student's implementation and choose a few of them for the final project showcase based on the time performance.

8 Masters Students

For students enrolled in 15-662, there is an extra requirement for this lab. You must include fulfill one of the extra credit requirements listed below. Extra credit may be awarded for impressive achievements beyond the mandatory choice. Please document these in your write-up.

9 Extra Credit

Any improvements, optimizations, or extra features for the project above the minimum requirements can be cause for extra credit. Extra credit is generally awarded for impressive achievements beyond the project requirements, at the discretion of the graders.

Ideas may include but are not limited to:

- Fast subdivision (e.g. 6th iteration of stegosaurus in under 10 seconds).
- Adaptive loop subdivision. Subdividing a flat mesh should not change the mesh in any way. A subdivision algorithm that adapts based on the contours of the mesh would be more efficient than subdividing every polygon.

Hint: Be careful not to introduce cracks in the mesh. There should not be more than one level of subdivision between adjacent triangles.

- An Interpolating subdivision scheme, such as Butterfly subdivision.

10 Advice

- As always, start early.
- Make sure you understand the loop subdivision algorithm completely before you try to implement it.
- When debugging possible mistakes with interior vertices, try `cube.obj` as it is the simplest obj we have provided you.
- When debugging possible mistakes with boundary vertices, try `open_cube.obj`
- Be careful with memory allocation, as too many or too frequent heap allocations will severely degrade performance.

- Make sure you have a submission directory that you can write to as soon as possible. Notify course staff if this is not the case.
- While C has many pitfalls, C++ introduces even more wonderful ways to shoot yourself in the foot. It is generally wise to stay away from as many features as possible, and make sure you fully understand the features you do use.

10.1 Additional Resources

<http://www.glprogramming.com/red/chapter09.html>

<http://www.mrl.nyu.edu/~dzorin/sig00course/>

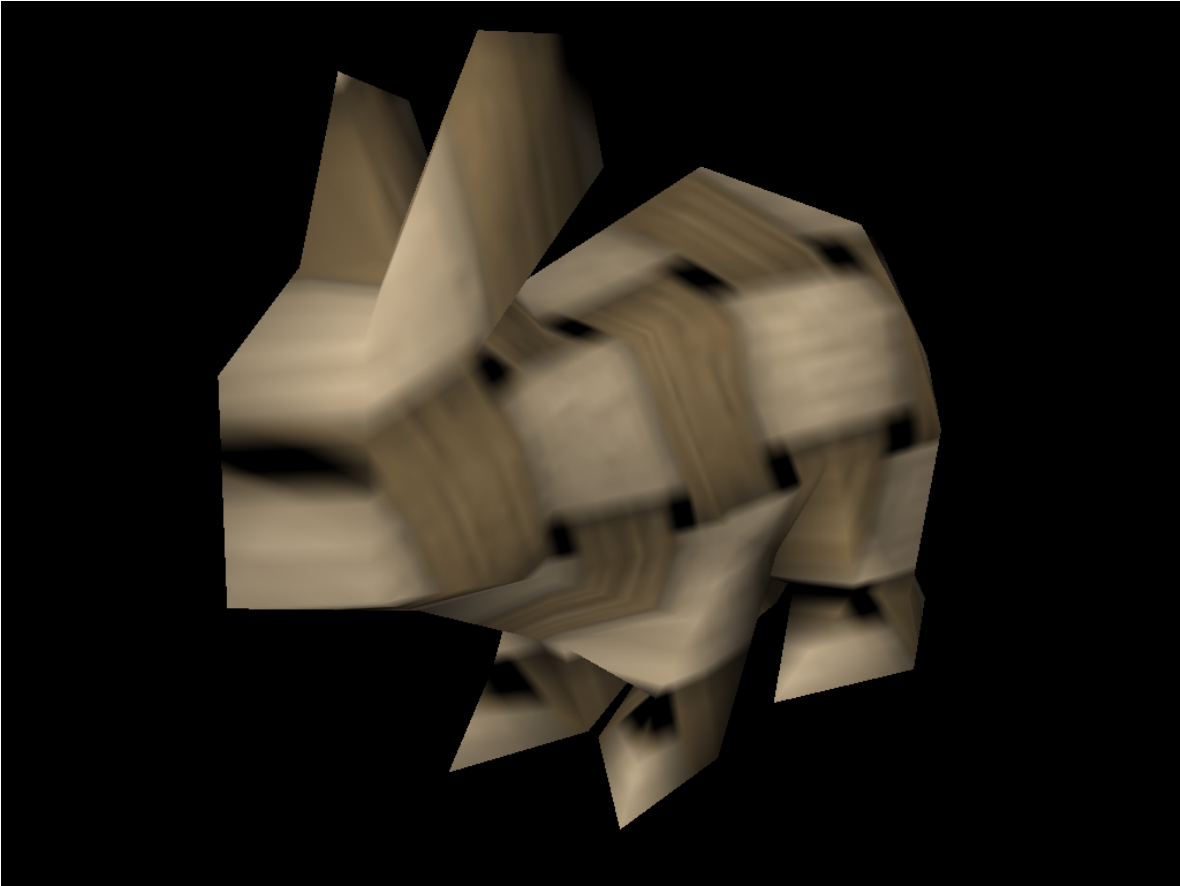


Figure 2: Textured bunny with 0 subdivisions

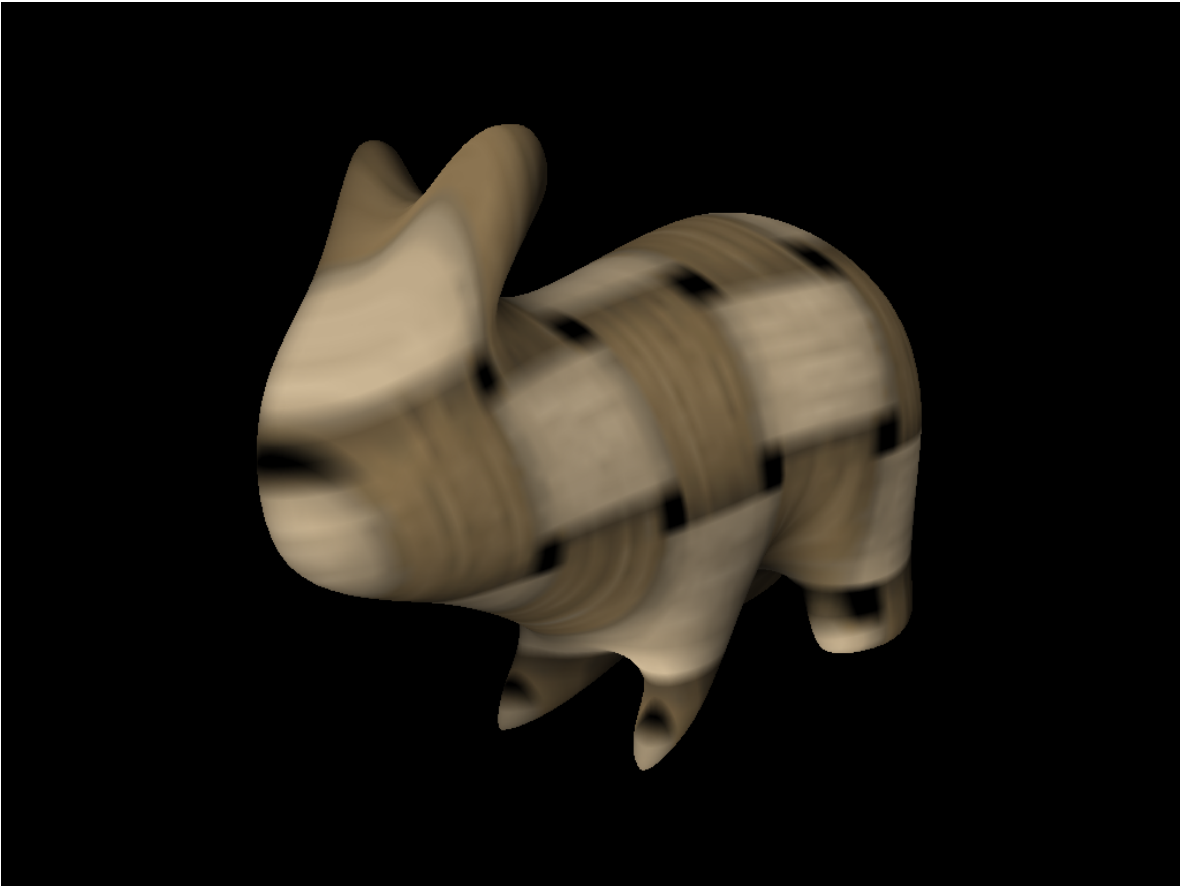


Figure 3: Textured bunny with 3 subdivisions

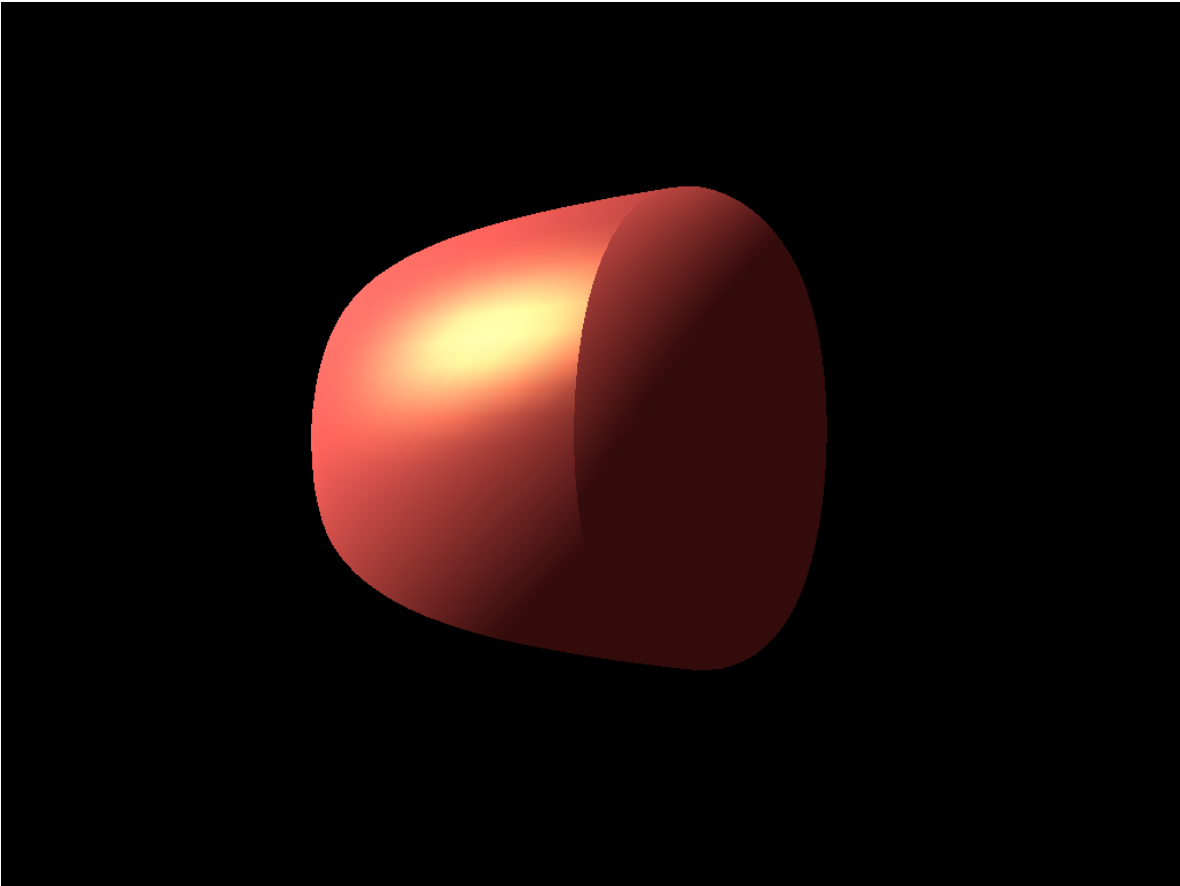


Figure 4: open_cube with 4 subdivisions

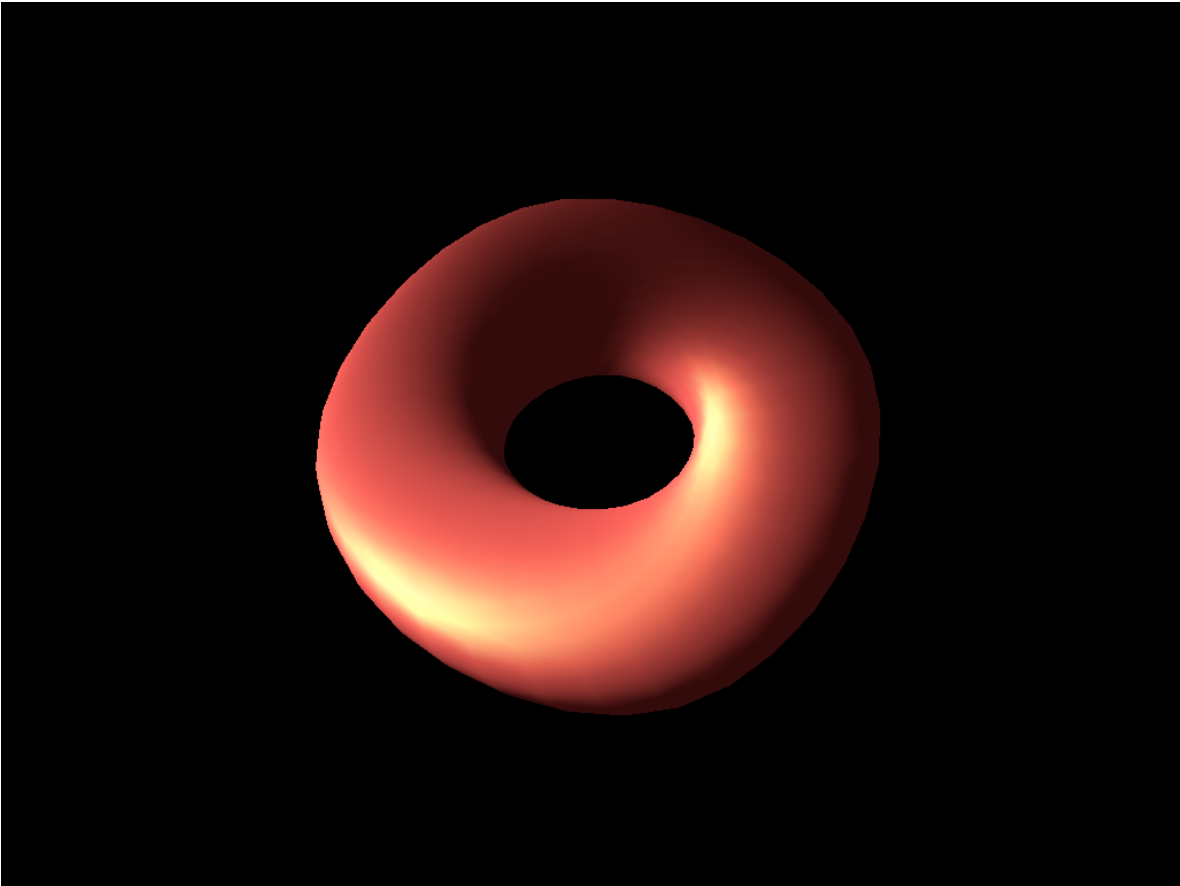


Figure 5: Torus with 3 subdivisions

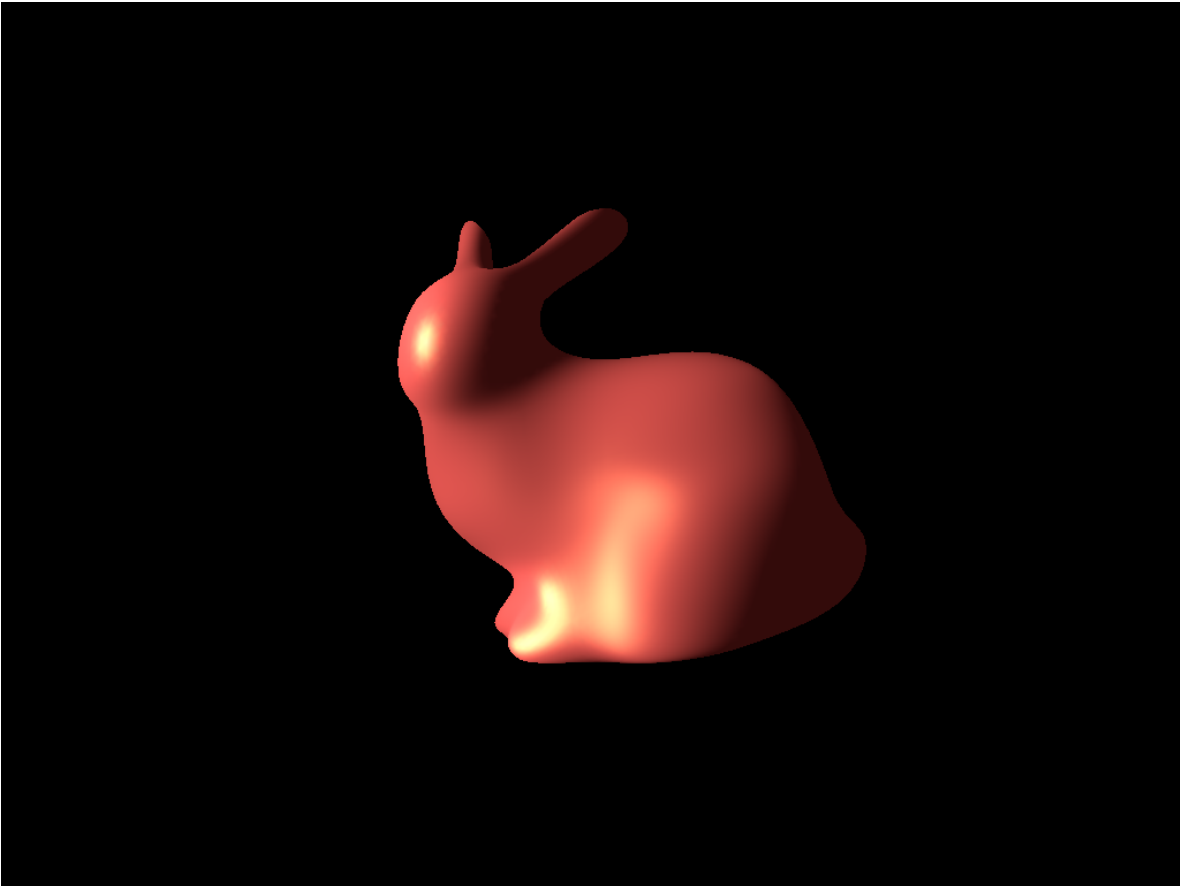


Figure 6: Bunny with 3 subdivisions

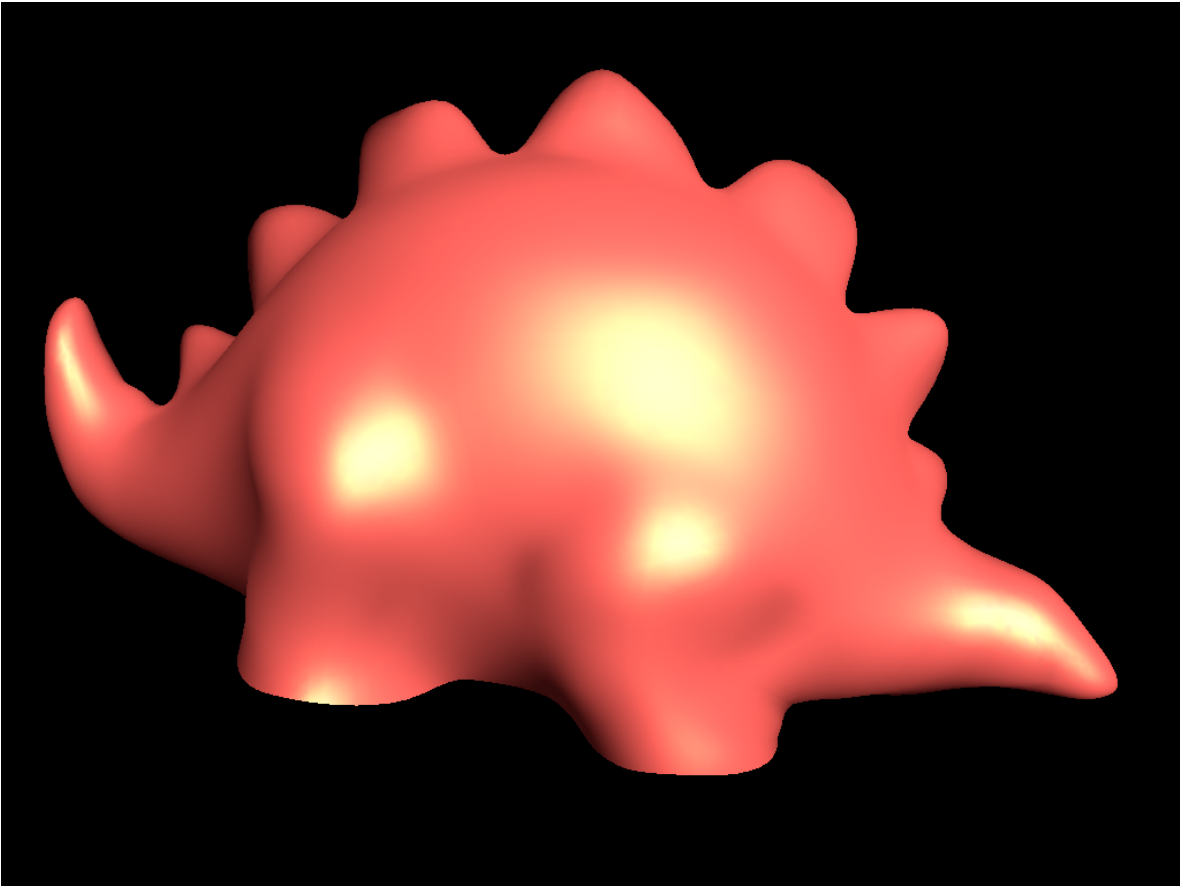


Figure 7: Stegosaurus with 2 subdivisions