

Student Questionnaire: Module 1

Version of October 15, 2015

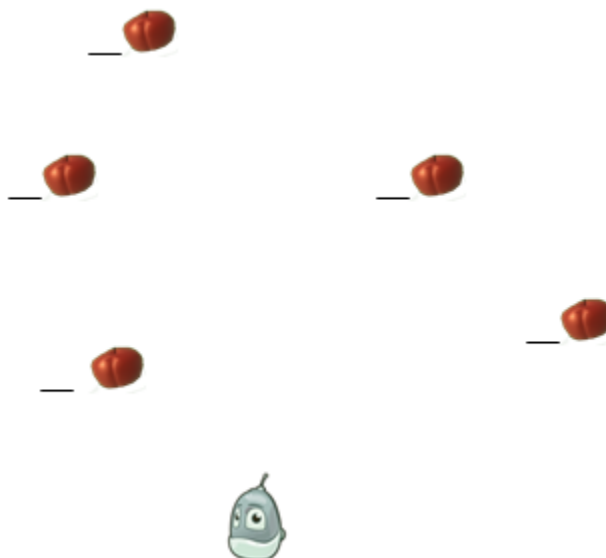
Let's review how the Kodu eats the apples.

Here are the rules for eating apples:



Remember: the kodu will always go to the _____ apple. (biggest/closest/frontmost/prettiest)

Here is a map showing the kodu and five apples. Based on your understanding of how the kodu moves, **draw the path the kodu will take** to eat all the apples. Start by drawing a line from the kodu to the first apple, then extend the line to the next apple, and so on. Finally, **write the numbers 1 through 5** next to the apples to show the order in which they are eaten.



Finding stars

Put an “X” next to the rule that tells the kodu to go to the nearest star:

| | |
|----------|--|
| 1. _____ | |
| 2. _____ | |
| 3. _____ | |

Is this a pursue rule or a consume rule? _____

Eating the stars

Put an “X” next to the rule that tells the kodu to eat the star when it reaches it:

| | |
|----------|--|
| 1. _____ | |
| 2. _____ | |
| 3. _____ | |

Is this a pursue rule or a consume rule? _____

Eating Candy Hearts

Suppose we want the Kodu to visit and eat all the candy hearts. Choose words from the list below to fill in the blanks to make the two rules we need to visit and eat the hearts:

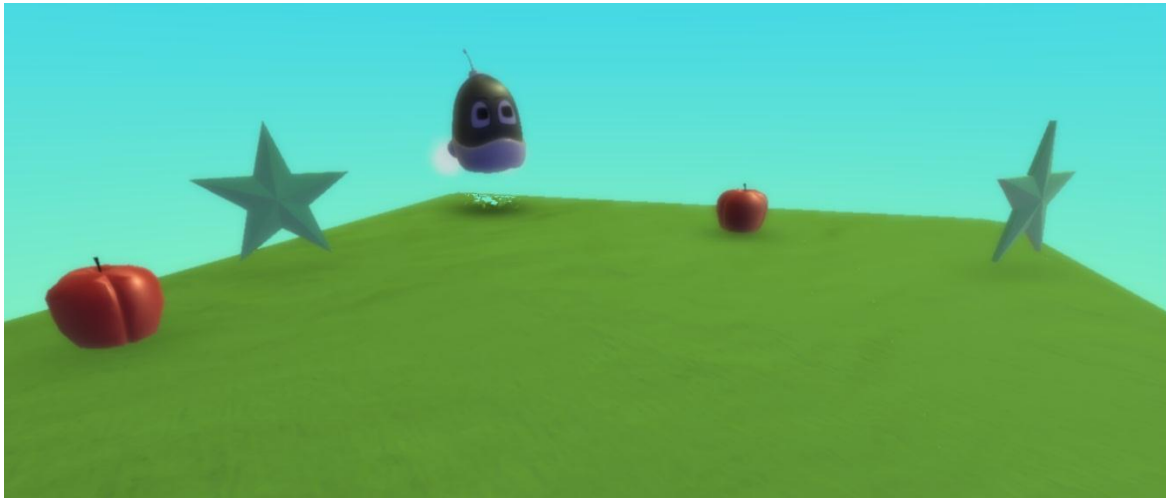
see bump
apple heart star
eat move
toward it

[1] WHEN _____ DO _____

[2] WHEN _____ DO _____

Eating Apples and Stars

Here is a world where the kodu can eat apples and stars.



Answer the next two questions using the apple/star world on the previous page, plus these rules:

| | |
|--|---|
| <div>1</div> <div>WHEN</div> <div>see</div> <div>apple</div> <div>+</div> <div>DO</div> <div>move</div> <div>toward</div> <div>+</div> | <p>What will the kodu eat first? Circle your answer.</p> <ol style="list-style-type: none"> Stars Apples Whichever thing is closest, no matter what kind. It will choose randomly. |
| <div>2</div> <div>WHEN</div> <div>see</div> <div>star</div> <div>+</div> <div>DO</div> <div>move</div> <div>toward</div> <div>+</div> | <p>When will the kodu eat its first star?</p> <ol style="list-style-type: none"> When there are no apples left. Right after it eats its first apple. It will never eat a star; it will keep looking for apples forever. It will only eat a star if it bumps into one by accident. |
| <div>3</div> <div>WHEN</div> <div>bump</div> <div>anything</div> <div>+</div> <div>DO</div> <div>eat</div> <div>it</div> | |

Answer the next two questions using the same apple/star world, but with these different rules:

| | |
|---|--|
| <div>1</div> <div>WHEN</div> <div>see</div> <div>star</div> <div>+</div> <div>DO</div> <div>move</div> <div>toward</div> <div>+</div> | <p>What will the kodu eat first?</p> <ol style="list-style-type: none"> Stars Apples Whichever thing is closest. A pizza |
| <div>2</div> <div>WHEN</div> <div>bump</div> <div>apple</div> <div>+</div> <div>DO</div> <div>eat</div> <div>it</div> | <p>When will the kodu eat an apple?</p> <ol style="list-style-type: none"> When there are no stars left. After it has eaten one star. Never, unless it bumps into an apple by accident. Before it eats its first star. |
| <div>3</div> <div>WHEN</div> <div>bump</div> <div>star</div> <div>+</div> <div>DO</div> <div>eat</div> <div>it</div> | |