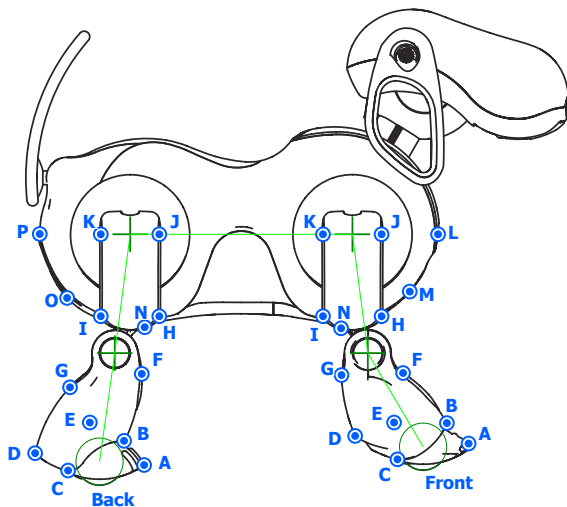


### Interest Points:

A - Toe{L,R}-{Fr,Bk}Paw<sub>4</sub>  
 B - Lower{Inner,Outer}Front{L,R}-{Fr,Bk}Shin<sub>3</sub>  
 C - Lower{Inner,Outer}Middle{L,R}-{Fr,Bk}Shin<sub>3</sub>  
 D - Lower{Inner,Outer}Back{L,R}-{Fr,Bk}Shin<sub>3</sub>  
 E - Middle{Inner,Outer}Middle{L,R}-{Fr,Bk}Shin<sub>3</sub>  
 F - Upper{Inner,Outer}Front{L,R}-{Fr,Bk}Shin<sub>3</sub>  
 G - Upper{Inner,Outer}Back{L,R}-{Fr,Bk}Shin<sub>3</sub>  
 H - Lower{Inner,Outer}Front{L,R}-{Fr,Bk}Thigh<sub>2</sub>  
 I - Lower{Inner,Outer}Back{L,R}-{Fr,Bk}Thigh<sub>2</sub>  
 J - Upper{Inner,Outer}Front{L,R}-{Fr,Bk}Thigh<sub>2</sub>  
 K - Upper{Inner,Outer}Back{L,R}-{Fr,Bk}Thigh<sub>2</sub>  
 L - Upper{L,R}Chest<sub>0</sub>  
 M - Lower{L,R}Chest<sub>0</sub>  
 N - {L,R}-{Fr,Bk}Belly<sub>0</sub>  
 O - Lower{L,R}Rump<sub>0</sub>  
 P - Upper{L,R}Rump<sub>0</sub>



### ERS-7 Legs

	$\Delta x$	$\Delta y$	$\Delta z$
1. - shoulder	65	0	0
2. - elevator	0	0	62.5
3. - knee	69.5	0	9
4. - ball	69.987	-4.993	4.7
h4. - ball	67.681	-18.503	4.7
Diameter of ball of foot is 23.433mm			
Each link offset is relative to previous link			

The shins shown in this diagram appear to be slightly distorted compared to a real robot.  
 Corresponding measurements have been taken from actual models.

